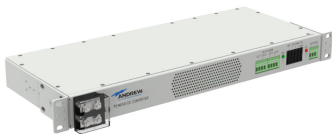


PS-CONV-48-24



PowerShift Power Supply, 48/24V DC 20A Converter panel, 19/23 in, 1 RU high, with four 24V DC GMT fuse outputs.

- Power Input/Output Connect – Plug and Play
 - 1U form factor saves rack space and power in wiring closets
 - Universal shelf mounting brackets for 19 inch, 23 inch or ETSI frame mounting
-
- 48 VDC to +24 VDC power converter
 - 19 & 23 inch rack mountable
 - Compact 1RU height
 - (1) -48 VDC Input and (4) +24VDC GMT Fuse Outputs
 - NO/NC dry contact alarming
 - LED status lights: Green - Power On / Red - Alarm indicator

Product Classification

Product Type	DC/DC Converter
Product Brand	PowerShift®

General Specifications

Color	Light Gray (RAL 7035)
Rack Type	EIA 19 in
Rack Units	1

Dimensions

Height	44.45 mm 1.75 in
Width	438.15 mm 17.25 in
Depth	177.8 mm 7 in

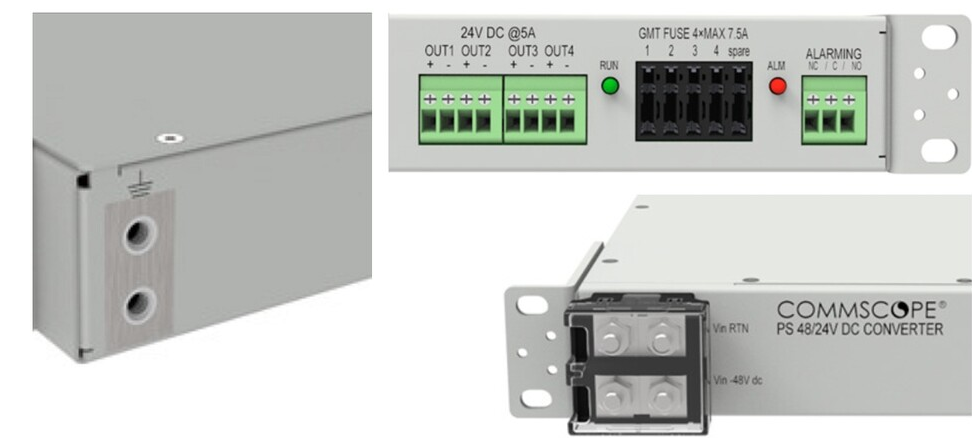
Electrical Specifications

Input Current, nominal	12.5 A
Input Voltage Range	-40 to -58 Vdc
Input Voltage, nominal	-48 Vdc
Output Current Range	0–20 A
Output Current, nominal, dc	5 A
Output Power Connections, quantity	4
Output Voltage, nominal	24 Vdc

PS-CONV-48-24

Power Efficiency 90 %

Representative Image



Environmental Specifications

Operating Temperature	-40 °C to +65 °C (-40 °F to +149 °F)
Storage Temperature	-40 °C to +85 °C (-40 °F to +185 °F)
Relative Humidity	0%–95%, non-condensing

Packaging and Weights

Weight, net 2.903 kg | 6.4 lb

Regulatory Compliance/Certifications

Agency	Classification
CHINA-ROHS	Above maximum concentration value
ISO 9001:2015	Designed, manufactured and/or distributed under this quality management system
ROHS	Compliant/Exempted
UK-ROHS	Compliant/Exempted

