

# 6VV-10A-F6



24-port multibeam antenna, 24x 1695–2690 MHz, 6x 10-14° HPBW, fixed electrical tilt, 1.3m length

- Provides 6 beams, Each supporting 4xMIMO for high capacity at venues or special events
- Covers the entire mid-band, including bands 1,3,7,25,66,30,38,40,41
- Increases capacity density for maximum throughput

## General Specifications

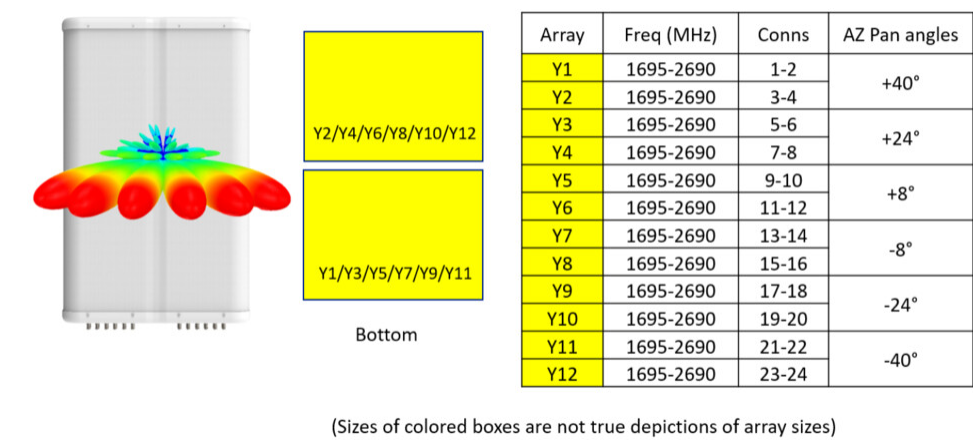
Antenna Type	Multibeam
Band	Single band
Color	Light Gray (RAL 7035)
Grounding Type	RF connector inner conductor and body grounded to reflector and mounting bracket
Performance Note	Outdoor usage
Radome Material	Fiberglass, UV resistant
Radiator Material	Low loss circuit board
Reflector Material	Aluminum
RF Connector Interface	4.3-10 Female
RF Connector Location	Bottom
RF Connector Quantity, high band	0
RF Connector Quantity, mid band	24
RF Connector Quantity, low band	0
RF Connector Quantity, total	24

## Dimensions

Width	970 mm   38.189 in
Depth	235 mm   9.252 in
Length	1300 mm   51.181 in
Net Weight, antenna only	50.2 kg   110.672 lb

## Array Layout

# 6VV-10A-F6



## Port Configuration



## Electrical Specifications

Impedance	50 ohm
Operating Frequency Band	1695 – 2690 MHz
Polarization	±45°
Total Input Power, maximum	2,000 W
BASTA Version, electrical	BASTA v12

# 6VV-10A-F6

## Electrical Specifications

	Y1-Y12	Y1-Y12	Y1-Y12	Y1-Y12	Y1-Y12
Frequency Band, MHz	1695–1880	1850–1990	1920–2200	2300–2500	2500–2690
RF Port	P1-P24	P1-P24	P1-P24	P1-P24	P1-P24
Gain, dBi	20.5	21	21.3	22.1	22.1
Beam Centers, Horizontal, degrees	±8 ±24 ±40	±8 ±24 ±40	±8 ±24 ±40	±8 ±24 ±40	±8 ±24 ±40
Beam Crossover, dB	8	8	9	11	12
Beamwidth, Horizontal, degrees	12	11	11	10	9
Beamwidth, Vertical, degrees	15.7	14.3	13.7	11.5	10.8
Beam Tilt, degrees	6	6	6	6	6
USLS (First Lobe), dB	16	15	15	15	15
Isolation, Cross Polarization, dB	25	25	25	25	25
Isolation, Beam to Beam, dB	19	19	19	19	18
VSWR   Return loss, dB	1.5   14.0	1.5   14.0	1.5   14.0	1.5   14.0	1.5   14.0
PIM, 3rd Order, 2 x 20 W, dBc	-153	-153	-153	-153	-153
Input Power per Port, maximum, watts	200	200	200	200	200

## Mechanical Specifications

BASTA Version, mechanical	BASTA v12
---------------------------	-----------

## Packaging and Weights

Width, packed	1122 mm   44.173 in
Depth, packed	561 mm   22.087 in
Length, packed	1566 mm   61.654 in
Weight, gross	75.9 kg   167.331 lb

## Regulatory Compliance/Certifications

Agency	Classification
CHINA-ROHS	Below maximum concentration value
ISO 9001:2015	Designed, manufactured and/or distributed under this quality management system
REACH-SVHC	Compliant as per SVHC revision on <a href="http://www.andrew.com/ProductCompliance">www.andrew.com/ProductCompliance</a>

# 6VV-10A-F6

---

ROHS	Compliant
UK-ROHS	Compliant



## Included Products

BSAMNT-9	–	Wide Profile Antenna Downtilt Mounting Kit for 2.4 - 4.5 in (60 - 115 mm) OD round members. Kit contains one scissor top bracket set and one bottom bracket set.
----------	---	--

## \* Footnotes

<b>Performance Note</b>	Severe environmental conditions may degrade optimum performance
-------------------------	---