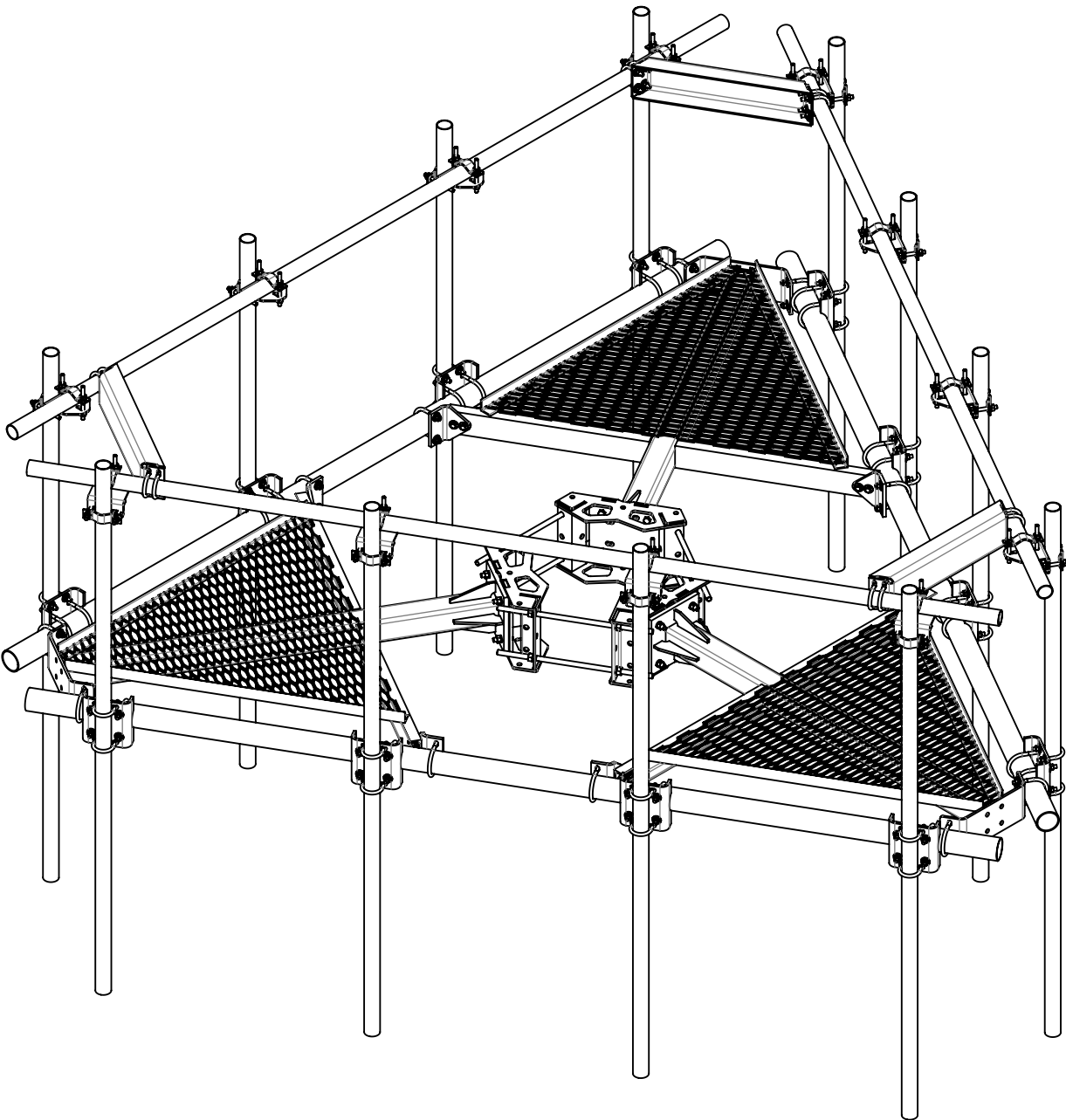
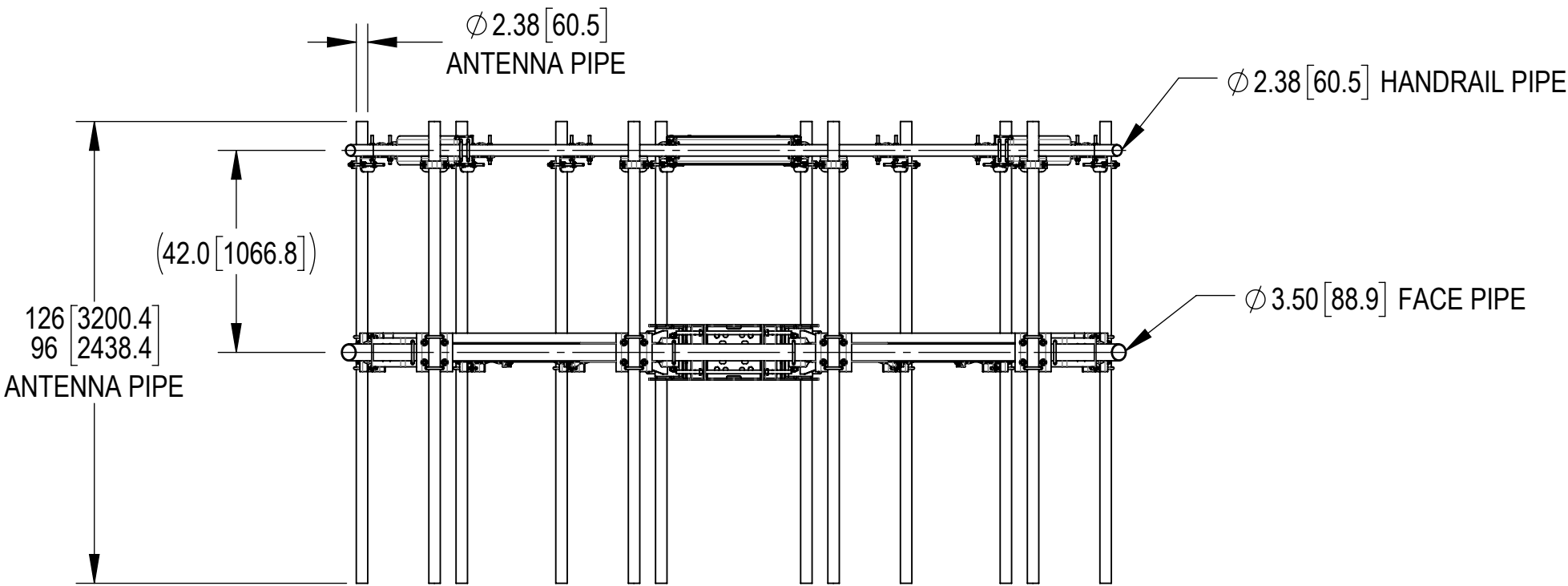
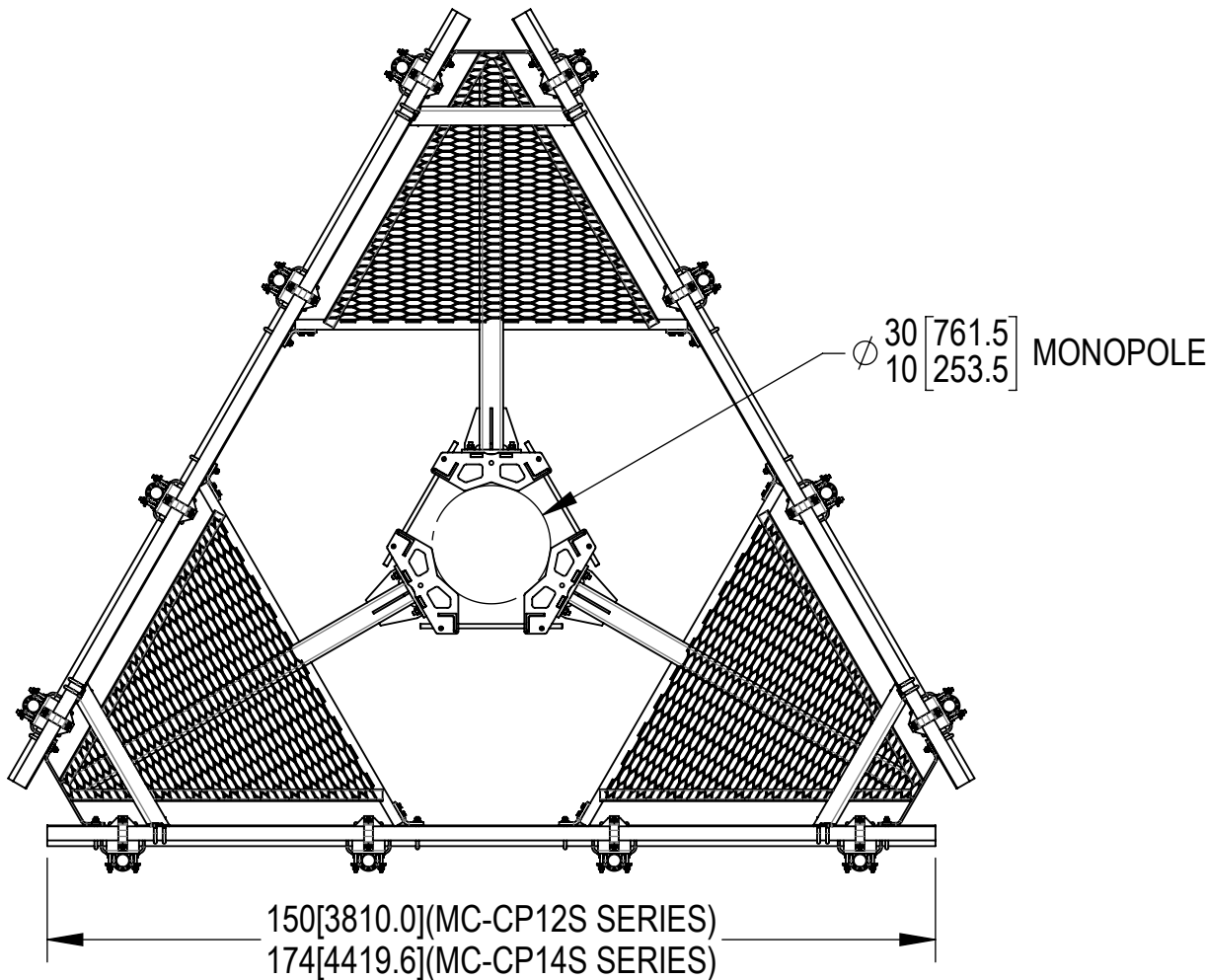




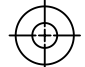
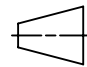


- 1.0 GENERAL NOTES
- 1.1 ALL METRIC DIMENSIONS ARE IN BRACKETS [X. X]
- 1.2 FOR PATENT INFO: <https://www.adwpat.com>
- 2.0 DESIGN NOTES
- 2.1 ANY HAZARDS OR OBSTRUCTIONS TO THE CLIMBING FACILITY AND SAFETY CLIMB MUST BE IDENTIFIED PRIOR TO INSTALLING THE APPURTENANCE. ADDITIONAL PRODUCTS MAY BE REQUIRED TO MAINTAIN THE INTEGRITY OF THE SAFETY CLIMB. DURING INSTALLATION, TEMPORARY AND/OR PERMANENT PRECAUTIONARY MEASURES SHOULD BE TAKEN TO PRESERVE THE CLIMBING FACILITY AND/OR SAFETY CLIMB.
- 2.2 FITS MONOPOLES 10"-30" O.D.
- 3.0 MANUFACTURING/SPECIAL REQUIREMENTS
- 3.1 TIGHTEN ALL BOLTS SECURING FLAT PLATES BY THE TURN-OF-NUT METHOD. TIGHTEN ALL U-BOLTS USING TURN-OF-NUT METHOD WITH ATTENTION TO LEAVE EQUAL DISTANCE AND EQUAL FORCE ON EACH LEG OF THE U-BOLT.
- 4.0 TEST
- 5.0 PACKAGING
- 5.1 PACKAGING SHALL MEET ANDREW REQUIREMENTS PER DOCUMENT IS-PL-3005
- 5.2 PRINTED DOCUMENT TO BE PLACED INSIDE POLYBAG AND THEN IN SHIPPING CONTAINER
- 5.3 EXTRA HARDWARE MAY BE SUPPLIED, BAGGED AND SHIPPED

REVISIONS			
REV.	DESCRIPTION	DATE	APPROVED
B	SIMPLIFIED SERIES DRAWING	LL1090 13MAY25	BA1025 50102553AMO



MC-CP12S-12-96 SHOWN FOR REFERENCE
(SEE TABLE 1 FOR ALL CONFIGURATIONS)

<div>ANDREW® an Amphenol company</div>								
TOLERANCES			SAP MATERIAL MASTER					
1 PLACE .X[X] ± 0.12[3.0]		3 PLACE .XXX[X] ± 0.03[0.8]		SEE TABLE 1				
2 PLACE .XX[X] ± 0.06[1.5]		ANGLES ± 2°						
FINISH			MATERIAL					
UNLESS OTHERWISE SPECIFIED DIMENSIONS ARE IN INCHES INTERPRET PER ANSI Y 14.5M-1994		NAME	DATE	TITLE MP,PLF,3S,12/14'FP,W/HR SERIES				
	CE	MSM	09FEB15					
	RW	LL1090	05/13/2025					
								
	AD	YC1015	05/14/2025					
	RE	YMENG	05/22/2025					
	ECN 50102553AMO			SCALE 1:28	DOCUMENT NO. MC-CP12S SERIES			
SIZE	Auth Group	INSL	MODEL		DRAWING			SHEET 1 OF 2
C			VERSION 03	STATUS RE	REVISION D	VERSION 00	STATUS RE	

Confidential

PART NUMBERS, WEIGHTS, & EPA

TABLE 1: CONFIGURATIONS

						INCLUDED PARTS									
PART NUMBER	DESCRIPTION	WEIGHT (LBS)	(EPA)A (FT^2)*	(EPA)A 1/2" ICE THICKNESS (FT^2)*	ANTENNA PIPES		MCCP1214SHK	MTC360714LSB	MCCP12BPB	MCCP1296PB	MCCP12126PB	MTC360714SSB	MCCP14BPB	MTC3607LSB	MCCP14126SB
MC-CP12S-B	MP,PLF,3S,12'FP,NOAP,W/HR	1393.08	28.19	34.79	-	1	1	1	-	-	-	-	-	-	
MC-CP12S-12-96	MP,PLF,3S,12'FP,(12)096"AP,W/HR	1672.14			12	1	1	-	1	-	-	-	-	-	
MC-CP12S-12-126	MP,PLF,3S,12'FP,(12)126"AP,W/HR	1758.54			12	1	1	-	-	1	-	-	-	-	
MC-CP14S-B	MP,PLF,3S,14'FP,NOAP,W/HR	1473.11	29.22	36.36	-	1	-	-	-	-	1	1	-	-	
MC-CP14S-12-96	MP,PLF,3S,14'FP,(12)096"AP,W/HR	1752.18			12	1	-	-	-	-	1	-	1	-	
MC-CP14S-12-126	MP,PLF,3S,14'FP,(12)126"AP,W/HR	1838.57			12	1	-	-	-	-	1	-	-	1	

* (EPA)A DOES NOT INCLUDE ANTENNA PIPES AND MOUNTING HARDWARE. IF DESIRED, ADD ANTENNA PIPE PER TABLE 2

TABLE 2: EPA OF EACH ANTENNA PIPE

ANTENNA PIPE	(EPA)A (FT²)	(EPA)A W/ 1/2" ICE THICKNESS (FT²)
2-3/8" X 96"	1.52	2.16
2-3/8" X 126"	2.00	2.84

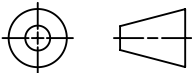
- NOTE:
1. ANTENNA PIPES ARE CONSIDERED SEPARATELY.
 2. KA FACTOR OF 3-SECTOR EPA INCLUDED.
 3. COMBINE THE ASSOCIATED EPA VALUES IN THE TABLES ABOVE TO DETERMINE THE EPA OF A MOUNT MODEL WITH A LISTED MOUNT PIPE CONFIGURATION.
FOR EXAMPLE, MC-CP12S-12-96 HAS A 3-SECTOR EPA OF 28.19 FT2 WITH NO ICE PLUS 12 ANTENNA PIPES WITH A 3-SECTOR EPA OF 12X1.52=18.24 FT2 WITH NO ICE.
SO, THE TOTAL EPA OF 46.43 FT2 FOR THE MC-CP12S-12-96.



TITLE

MP,PLF,3S,12/14'FP,W/HR SERIES

SIZE	SCALE	DOCUMENT NO.		
C	1:30	MC-CP12S SERIES		



DRAWING			SHEET 2 OF 2
VERSION	STATUS	REVISION	
00	RE	B	

Confidential