

# RRZZHHTT65AR6MR



16-port sector antenna, 4x 694–960, 4x 1427–2690, 4x 1695–2180 and 4x 2490–2690 MHz, 65° HPBW, 6x RET

- Supports re-configurable antenna sharing capability enabling control of the internal RET system using up to two separate RET compatible OEM radios
- New endcap designs provide improved wind loading performance
- All internal RET actuators are connected in “Cascaded MRET” configuration

## General Specifications

Antenna Type	Sector
Band	Multiband
Color	Light Gray (RAL 7035)
Grounding Type	RF connector inner conductor and body grounded to reflector and mounting bracket
Performance Note	Outdoor usage   Wind loading figures are validated by wind tunnel measurements described in white paper WP-112534-EN
Radome Material	Fiberglass, UV resistant
Reflector Material	Aluminum
RF Connector Interface	4.3-10 Female
RF Connector Location	Bottom
RF Connector Quantity, high band	0
RF Connector Quantity, mid band	12
RF Connector Quantity, low band	4
RF Connector Quantity, total	16

## Remote Electrical Tilt (RET) Information

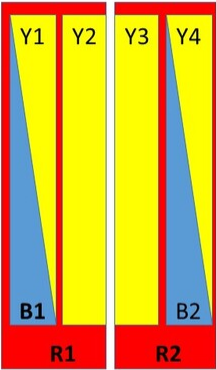
RET Hardware	CommRET v2
RET Interface	8-pin DIN Female   8-pin DIN Male
Input Voltage	10–30 Vdc
Internal RET	Low band (2)   Mid band (4)
Power Consumption, active state, maximum	8 W
Power Consumption, idle state, maximum	1 W
Protocol	3GPP/AISG 2.0 (Multi-RET)

# RRZZHHTT65AR6MR

## Dimensions

Width	498 mm   19.606 in
Depth	197 mm   7.756 in
Length	1499 mm   59.016 in
Net Weight, antenna only	33.9 kg   74.737 lb

## Array Layout

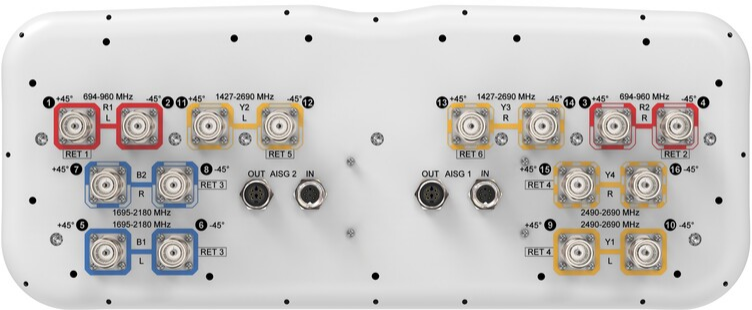


Array	Freq (MHz)	Conns	RET (SRET)	AISG RET UID
R1	694-960	1-2	1	CPxxxxxxxxxxxxR1
R2	694-960	3-4	2	CPxxxxxxxxxxxxR2
B1	1695-2180	5-6	3	CPxxxxxxxxxxxxB1
B2	1695-2180	7-8		
Y1	2490-2690	9-10	4	CPxxxxxxxxxxxxY1
Y4	2490-2690	15-16		
Y2	1427-2690	11-12	5	CPxxxxxxxxxxxxY2
Y3	1427-2690	13-14	6	CPxxxxxxxxxxxxY3

(Sizes of colored boxes are not true depictions of array sizes)

Left                      Right  
Bottom

## Port Configuration



# RRZZHHTT65AR6MR

## Electrical Specifications

Impedance	50 ohm
Operating Frequency Band	1427 – 2690 MHz   1695 – 2180 MHz   2490 – 2690 MHz   694 – 960 MHz
Polarization	±45°
Total Input Power, maximum	900 W @ 50 °C

## Electrical Specifications

	R1,R2	R1,R2	R1,R2	B1,B2	Y1,Y4	Y2,Y3	Y2,Y3	Y2,Y3
Frequency Band, MHz	694–790	790–890	890–960	1695–2180	2490–2690	1427–1518	1695–2180	2300–2690
RF Port	1-4	1-4	1-4	5-8	9,10,15,16	11-14	11-14	11-14
Gain, dBi	13.2	13.5	13.7	16.9	17.8	15.3	17.4	18.3
Beamwidth, Horizontal, degrees	70	68	64	68	56	69	63	58
Beamwidth, Vertical, degrees	16.8	14.9	13.9	6.6	5.2	8.8	6.8	5.2
Beam Tilt, degrees	2–16	2–16	2–16	2–12	2–12	2–12	2–12	2–12
USLS (First Lobe), dB	16	15	17	19	18	17	16	20
Front-to-Back Ratio at 180°, dB	30	28	28	31	29	33	32	34
Isolation, Cross Polarization, dB	27	27	27	27	27	26	26	26
Isolation, Inter-band, dB	27	27	27	27	27	27	27	27
VSWR   Return loss, dB	1.5   14.0	1.5   14.0	1.5   14.0	1.5   14.0	1.5   14.0	1.5   14.0	1.5   14.0	1.5   14.0
PIM, 3rd Order, 2 x 20 W, dBc	-150	-150	-150	-150	-150	-150	-150	-150
Input Power per Port at 50°C, maximum, watts	300	300	300	250	150	250	250	200

## Mechanical Specifications

Effective Projective Area (EPA), frontal	0.47 m²   5.059 ft²
Effective Projective Area (EPA), lateral	0.14 m²   1.507 ft²
Wind Loading @ Velocity, frontal	503.0 N @ 150 km/h (113.1 lbf @ 150 km/h)
Wind Loading @ Velocity, lateral	150.0 N @ 150 km/h (33.7 lbf @ 150 km/h)
Wind Loading @ Velocity, maximum	604.0 N @ 150 km/h (135.8 lbf @ 150 km/h)
Wind Loading @ Velocity, rear	346.0 N @ 150 km/h (77.8 lbf @ 150 km/h)
Wind Speed, maximum	288 km/h (179 mph)

# RRZZHHTT65AR6MR

## Packaging and Weights

Width, packed	565 mm   22.244 in
Depth, packed	309 mm   12.165 in
Length, packed	1686 mm   66.378 in
Weight, gross	47.5 kg   104.719 lb

## Regulatory Compliance/Certifications

Agency	Classification
CHINA-ROHS	Above maximum concentration value
ISO 9001:2015	Designed, manufactured and/or distributed under this quality management system
ROHS	Compliant/Exempted
UK-ROHS	Compliant/Exempted



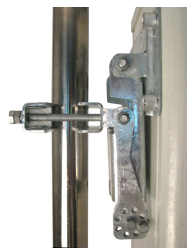
## Included Products

BSAMNT-3	–	Wide Profile Antenna Downtilt Mounting Kit for 2.4 - 4.5 in (60 - 115 mm) OD round members. Kit contains one scissor top bracket set and one bottom bracket set.
----------	---	--

## \* Footnotes

Performance Note	Severe environmental conditions may degrade optimum performance
------------------	---

# BSAMNT-3



Wide Profile Antenna Downtilt Mounting Kit for 2.4 - 4.5 in (60 - 115 mm) OD round members. Kit contains one scissor top bracket set and one bottom bracket set.

## Product Classification

**Product Type** Downtilt mounting kit

## General Specifications

**Application** Outdoor

**Color** Silver

## Dimensions

**Compatible Diameter, maximum** 115 mm | 4.528 in

**Compatible Diameter, minimum** 60 mm | 2.362 in

**Weight, net** 6.2 kg | 13.669 lb

## Material Specifications

**Material Type** Galvanized steel

## Packaging and Weights

**Included** Brackets | Hardware

**Packaging quantity** 1

**Weight, gross** 6.4 kg | 14.11 lb

## Regulatory Compliance/Certifications

Agency	Classification
CE	Compliant with the relevant CE product directives
CHINA-ROHS	Below maximum concentration value
ISO 9001:2015	Designed, manufactured and/or distributed under this quality management system
REACH-SVHC	Compliant as per SVHC revision on <a href="http://www.andrew.com/ProductCompliance">www.andrew.com/ProductCompliance</a>
ROHS	Compliant
UK-ROHS	Compliant

