

P040-0146 REVISION A, SEPT 2025

MOUNTING KITS FOR VENUE ANTENNAS

**APM40-VEN: MOUNTING SYSTEMS FOR CYLINDRICAL PIPE INSTALLATIONS
(50-110 MM PIPE DIAMETER)**

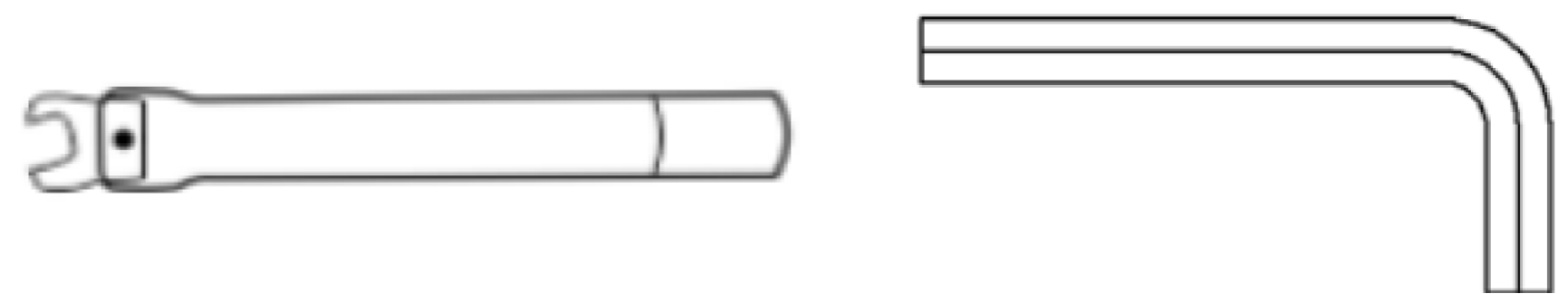
THIS DOCUMENT EXPLAINS HOW TO INSTALL AN ANTENNA USING A APM40-VEN MOUNT KIT.



ALL FASTENERS MUST BE TIGHTENED TO THE DEFINED TORQUE VALUE AFTER ONSITE INSTALLATION TO THE SPECIFIED TILT POSITION, INCLUDING INSTALLATION AT 0 DEGREE, SEE MOUNTING KIT INSTALLATION DIAGRAMS ON FOLLOWING PAGES FOR CORRECT TORQUE RECOMMENDATIONS.

ITEM NO.	DESCRIPTION	APM40-VEN QUANTITY
1	M4 HEX NUT	2
2	M8-FLAT WASHER	4
3	M4 FLAT WASHER	2
4	M4 X 12 HEX SOCKET HEAD CAP SCREW	2
5	M10-PLAIN WASHER	6
6	M10 FULL NUT	4
7	M8 HEX NUT	3
8	M8 - SPRING WASHER	3
9	M10X200 HEXAGON HEAD BOLT	2
10	M8X25 HEX SOCKET HEAD CAP SCREW	2
11	M8X100 HEX SOCKET HEAD CAP SCREW	1
12	LENS ANTENNA BRACKET - SPACER	1
13	ANTENNA POLE BRACKET - 1	1
14	ANTENNA POLE BRACKET - 2	1
15	POLE MOUNTING BRACKET - 2	1
16	POLE MOUNTING BRACKET - 1	1

PART LISTS



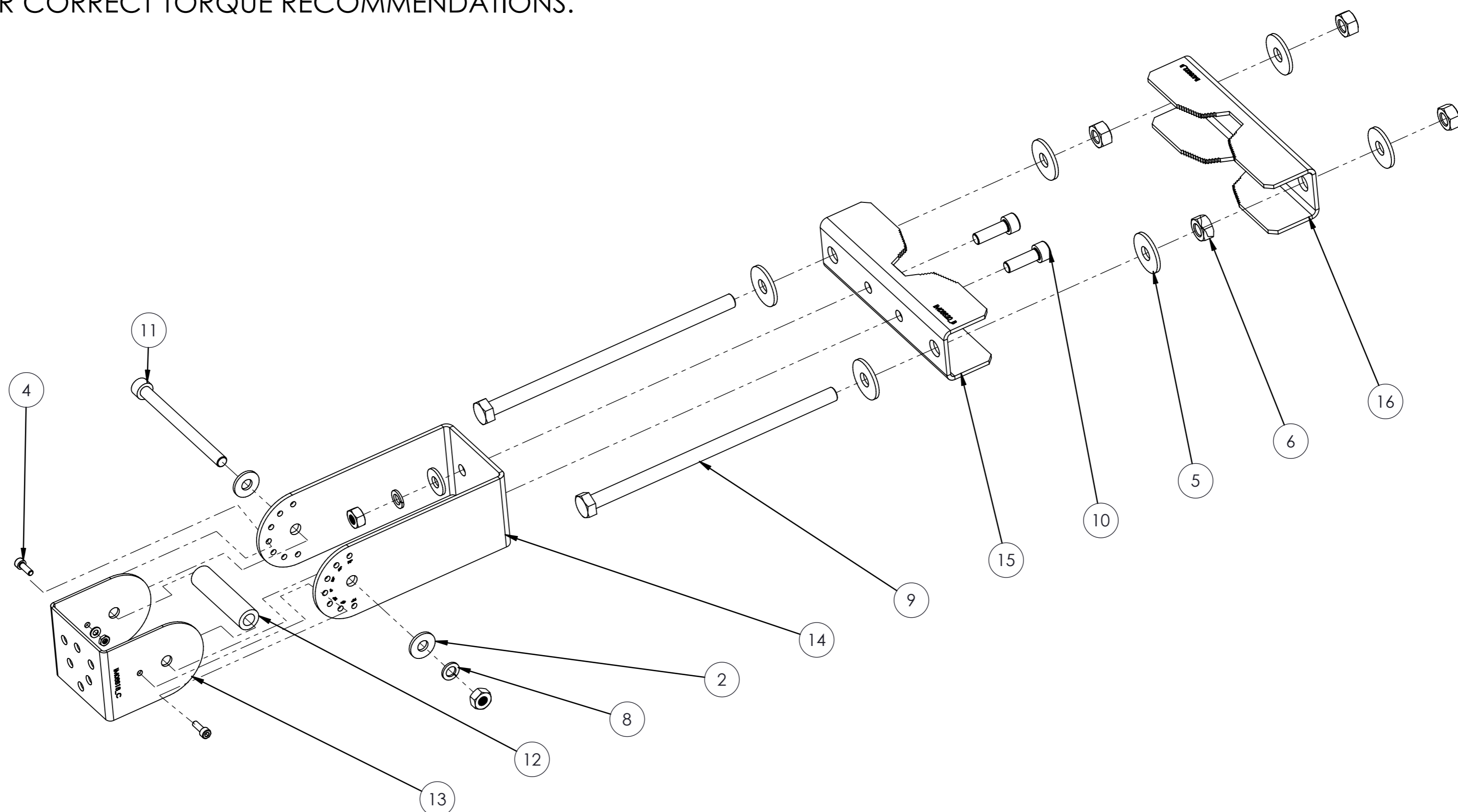
TORQUE WRENCH & ALLEN KEYS ACCURACY WITHIN 5% OF DEFINITION TORQUE VALUE.

TOOL	SIZE	TORQUE
TORQUE WRENCH	7mm	3N·m
	10mm	8.4N·m
	13mm	21N·m
	17mm	40N·m
ALLEN KEYS	3mm	3N·m
	5mm	8.4N·m
	6mm	21N·m

INSTALLATION TOOLS LIST

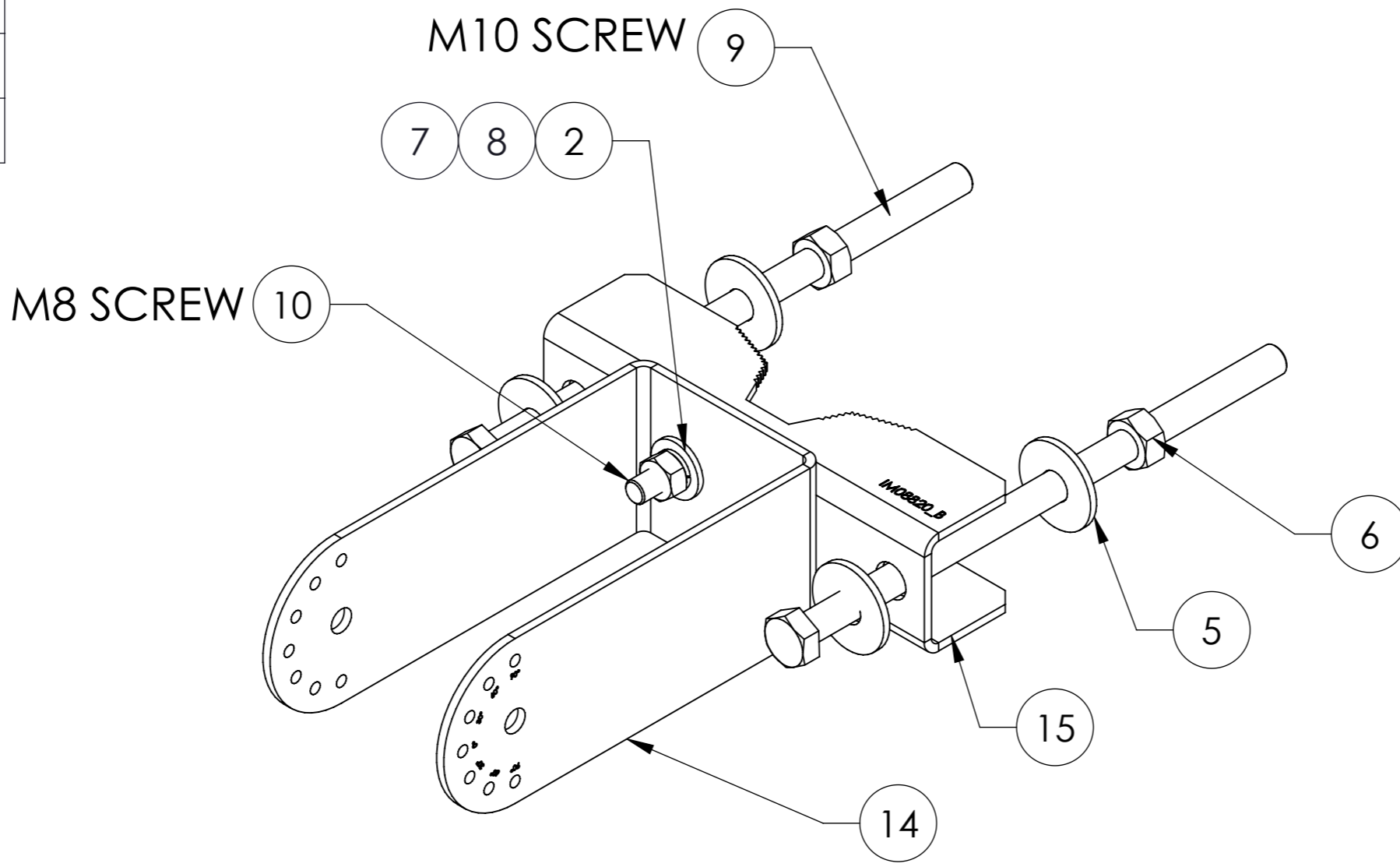


ALL FASTENERS MUST BE TIGHTENED TO THE DEFINED TORQUE VALUE AFTER ONSITE INSTALLATION TO THE SPECIFIED TILT POSITION, INCLUDING INSTALLATION AT 0 DEGREE, SEE MOUNTING KIT INSTALLATION DIAGRAMS ON FOLLOWING PAGES FOR CORRECT TORQUE RECOMMENDATIONS.



Exploded view

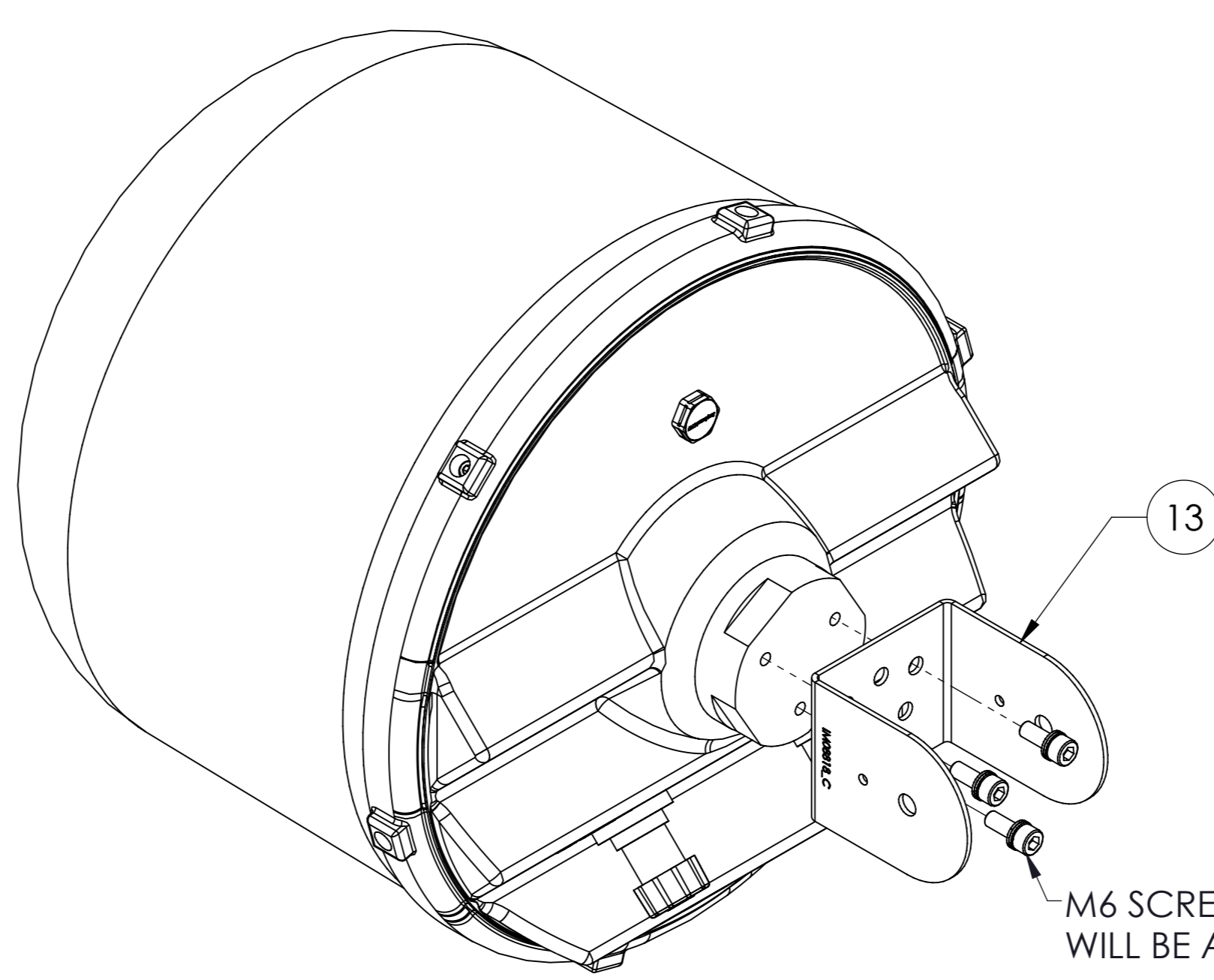
REQUIRED TORQUE	
M8	21N·m (16ft·lb)
M10	40N·m (30ft·lb)



CRITICAL: ASSEMBLE THE M8 FLAT WASHER, SPRING WASHER & NUT MANUALLY FIRST AND THEN TIGHTEN BY TORQUE WRENCH WITH INTERCHANGEABLE RING HEAD. SIMILIERLY FOLLOW FOR M10 FLAT WASHER AND NUT.

PRE-ASSEMBLY OF PIPE BRACKET BY FIELD INSTALLER

REQUIRED TORQUE	
M6	8.4N·m (6.2ft·lb)

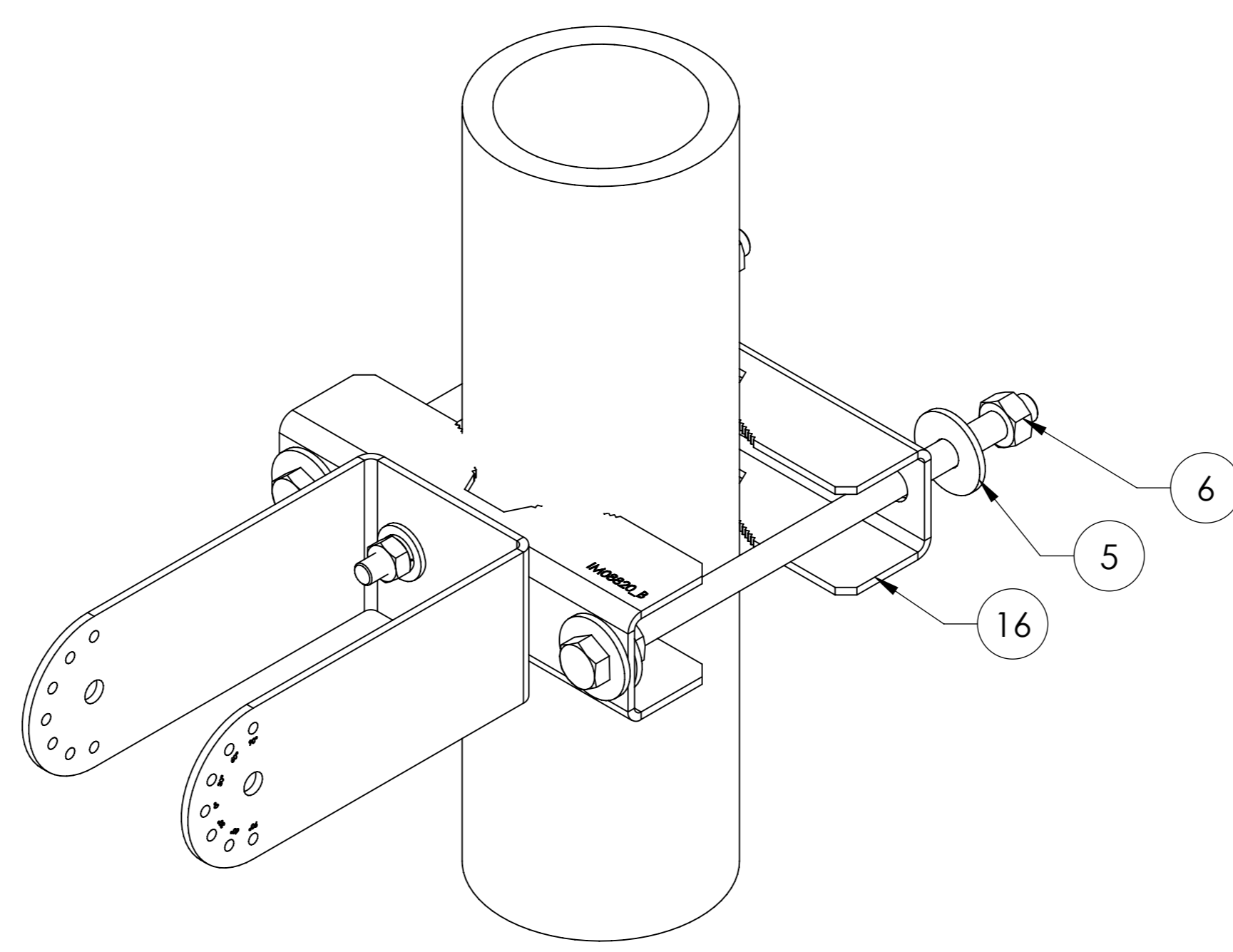


M6 SCREW AND WEDGE WASHER WILL BE ASSEMBLED WITH ANTENNA

CRITICAL: ASSEMBLE THE ANTENNA BRACKET WITH M6 SCREW WITH WEDGE WASHER MANUALLY FIRST AND THEN TIGHTEN BY TORQUE WRENCH WITH INTERCHANGEABLE RING HEAD.

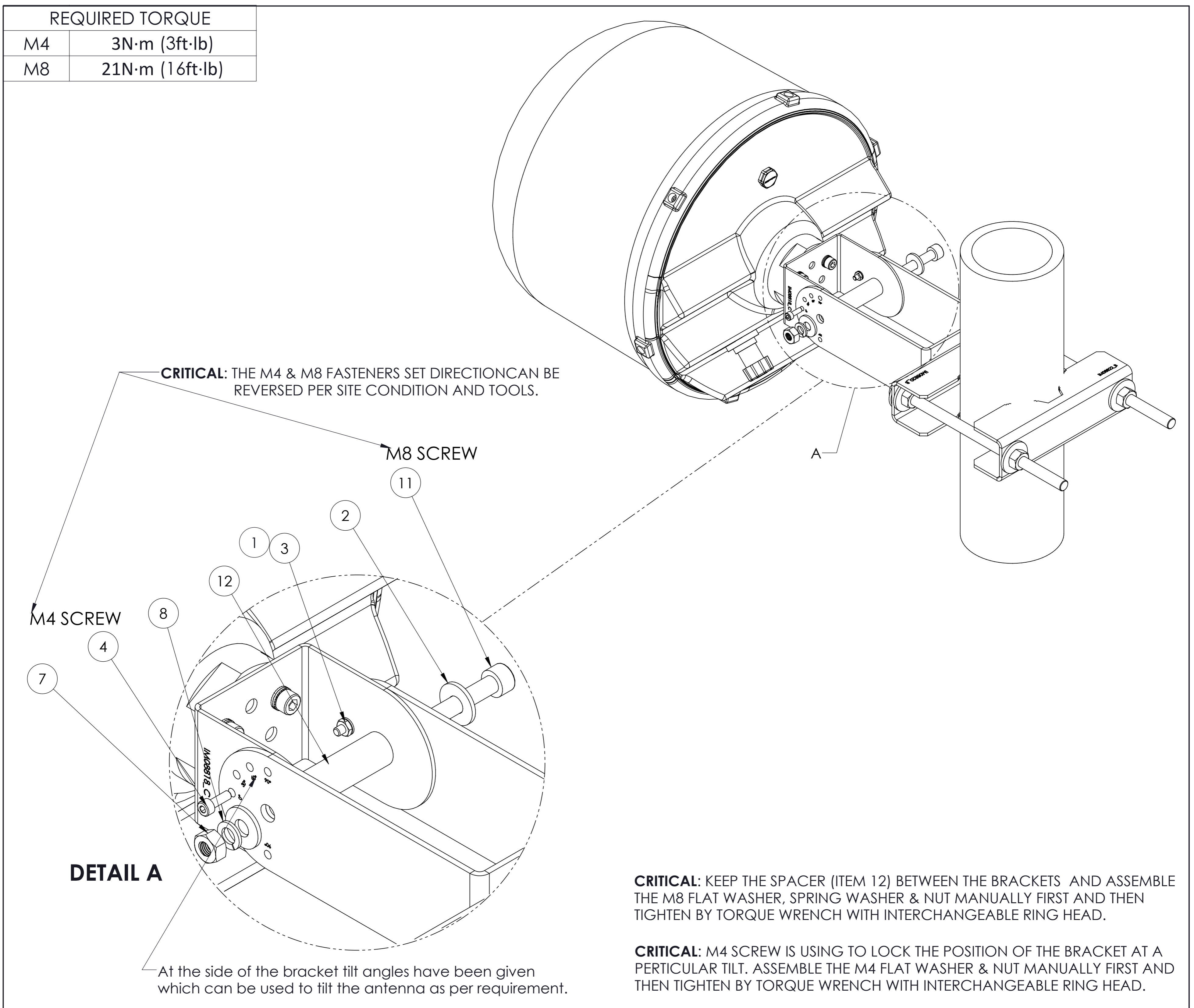
PRE-ASSEMBLY OF ANTENNA BRACKET BY FIELD INSTALLER

REQUIRED TORQUE	
M10	40N·m (30ft·lb)



CRITICAL: ASSEMBLE THE POLE BRACKET WITH M10 FLAT WASHER & NUT MANUALLY FIRST AND THEN TIGHTEN BY TORQUE WRENCH WITH INTERCHANGEABLE RING HEAD.

ASSEMBLE THE PRE-ASSEMBLED PIPE BRACKET ON POLE BY FIELD INSTALLER



RF CABLE CONNECTION



THE FEMALE RF CONNECTORS FITTED TO THE ANTENNA ARE DESIGNED TO FIT JUMPER CABLES WITH STANDARD RELATED MALE RF CONNECTOR. TIGHTEN THE RF CONNECTOR COUPLING ACCORDING TO TORQUE SPECIFICATION IN ANTENNA LABEL, IF THE RF CONNECTORS ARE TIGHTENED BEYOND THE RECOMMEND TORQUE, THE RF CONNECTION TO THE ANTENNA MAY BE DAMAGED. APPLIED TORQUE TO THE CONNECTOR SHALL BE IN THE RANGE OF 5-8 N*M.

SAFETY NOTICE

THE INSTALLATION, MAINTENANCE, OR REMOVAL OF AN ANTENNA REQUIRES QUALIFIED, EXPERIENCED PERSONNEL. ANDREW INSTALLATION INSTRUCTIONS ARE WRITTEN FOR SUCH INSTALLATION PERSONNEL. ANTENNA SYSTEMS SHOULD BE INSPECTED ONCE A YEAR BY QUALIFIED PERSONNEL TO VERIFY PROPER INSTALLATION, MAINTENANCE, AND CONDITION OF EQUIPMENT.

ANDREW DISCLAIMS ANY LIABILITY OR RESPONSIBILITY FOR THE RESULTS OF IMPROPER OR UNSAFE INSTALLATION PRACTICES. IT IS RECOMMENDED THAT TRANSMIT POWER BE TURNED OFF WHEN THE FIELD INSTALLATION IS PERFORMED. FOLLOW ALL APPLICABLE SAFETY PRECAUTIONS AS SHOWN ON THIS PAGE.



DO NOT INSTALL NEAR POWER LINES, POWER LINES, TELEPHONE LINES, AND GUY WIRES LOOK THE SAME. ASSUME ANY WIRE OR LINE CAN ELECTROCUTE YOU.



DO NOT INSTALL ON A WET OR WINDY DAY OR WHEN LIGHTNING OR THUNDER IS IN THE AREA. DO NOT USE METAL LADDER.



WEAR SHOES WITH RUBBER SOLES AND HEELS. WEAR PROTECTIVE CLOTHING INCLUDING A LONG-SLEEVED SHIRT AND RUBBER GLOVES.