

- 1.0 GENERAL NOTES
- 1.1 ALL METRIC DIMENSIONS ARE IN BRACKETS [X. X]
- 1.2 FOR PATENT INFO: <https://www.adwpat.com>

2.0 DESIGN NOTES

3.0 MANUFACTURING/SPECIAL REQUIREMENTS

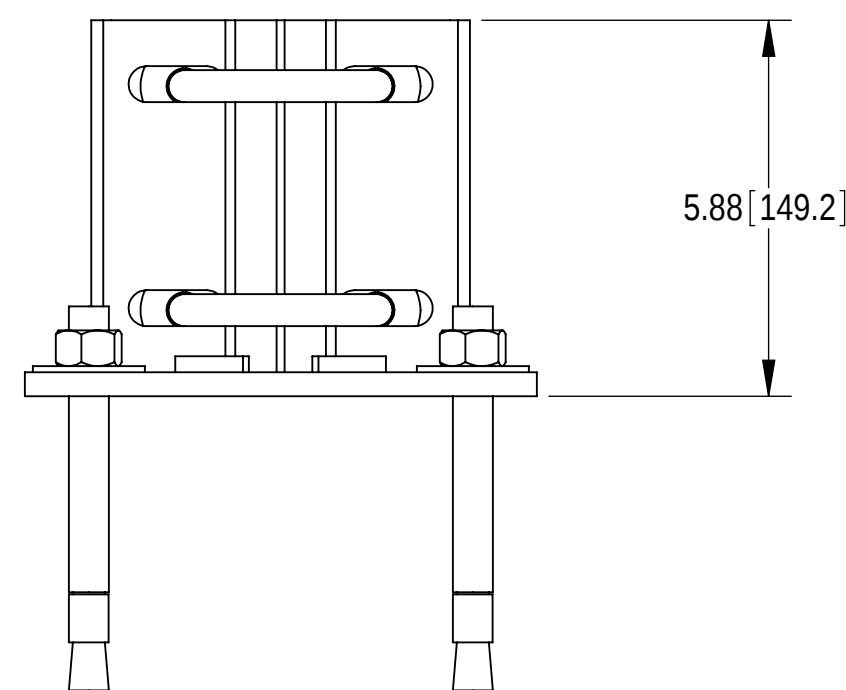
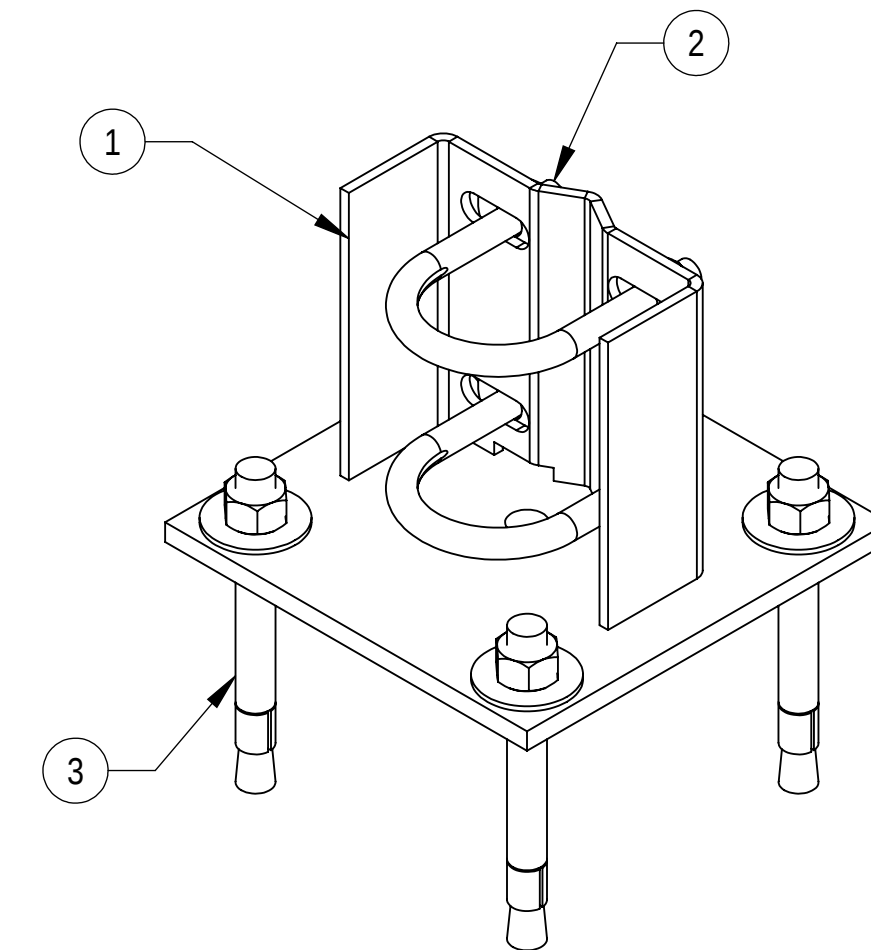
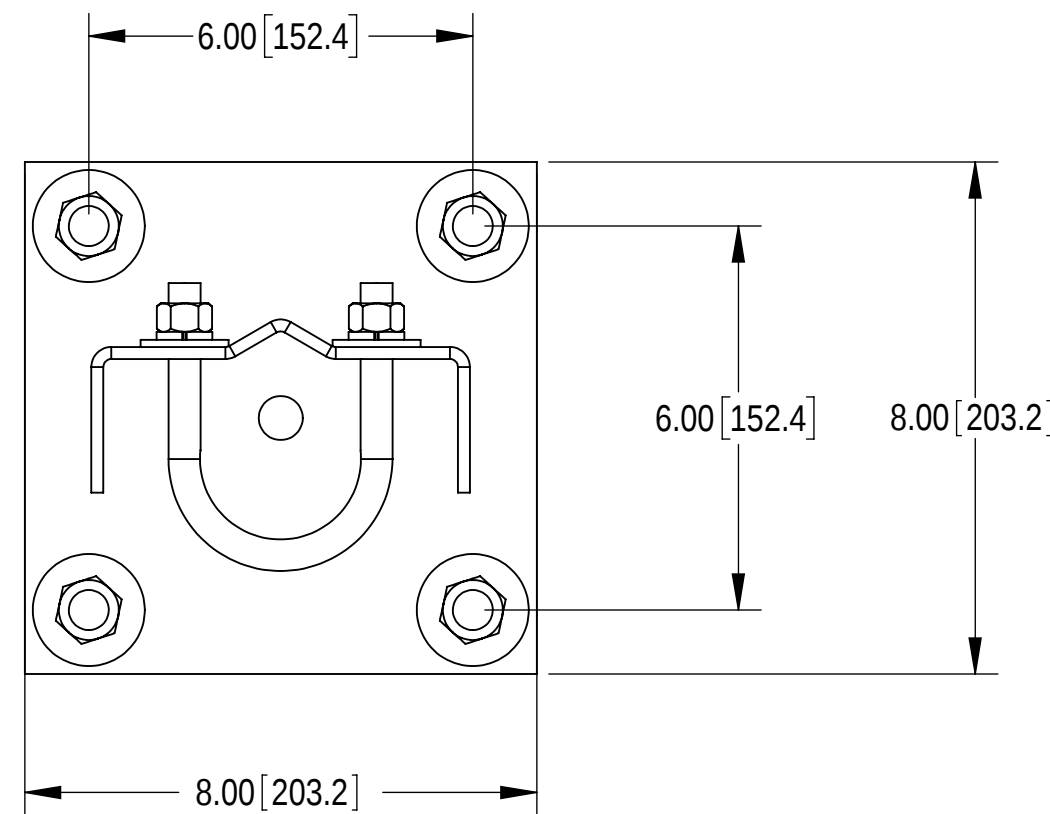
- 3.1 TIGHTEN ALL BOLTS 3/8" OR LARGER SECURING FLAT PLATES SNUG TIGHT. TIGHTEN ALL U-BOLTS SNUG TIGHT, WITH ATTENTION TO LEAVE EQUAL DISTANCE AND EQUAL FORCE ON EACH LEG OF U-BOLT.
- 3.2 SNUG TIGHT IS DEFINED AS THE CONDITION OBTAINED WITH A FEW IMPACTS OF AN IMPACT WRENCH OR THE FULL EFFORT OF AN INSTALLER USING AN ORDINARY SPUD WRENCH TO BRING THE CONNECTED LAYERS (PLIES) OF STEEL INTO FULL CONTACT.
- 3.3 FOR BOLTS IN A PATTERN, TIGHTEN IN A CRISS-CROSS OR STAR SEQUENCE, INCREASING TORQUE IN GRADUAL STEPS UNTIL SNUG TIGHT.


4.0 TEST

5.0 PACKAGING

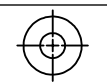
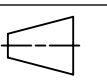
- 5.1 PACKAGING SHALL MEET ANDREW REQUIREMENTS PER DOCUMENT IS-PL-3005
- 5.2 PRINTED DOCUMENT TO BE PLACED INSIDE POLYBAG AND THEN IN SHIPPING CONTAINER
- 5.3 EXTRA HARDWARE MAY BE SUPPLIED, BAGGED AND SHIPPED

REVISIONS			
REV.	DESCRIPTION	DATE	APPROVED
A	INITIAL RELEASE	NSUN 28DEC26	8000044422
B	UPDATED DRAWING TO NEW FORMAT	YC1059 28JAN26	BA1025 50106779AMO





ANDREW[®] an Amphenol company

TOLERANCES		SAP MATERIAL MASTER				
1 PLACE .X[X] ± 0.25[6.3]	3 PLACE .XXX[X] ± 0.060[1.5]	WBBS238				
2 PLACE .XX[X] ± 0.12[3.0]	ANGLES ± 2°					
FINISH		MATERIAL				
UNLESS OTHERWISE SPECIFIED DIMENSIONS ARE IN INCHES INTERPRET PER ANSI Y 14.5M-1994		NAME	DATE			
		CE NSUN	22DEC20			
		RW YC1059	02/10/2026			
		AD YMENG	02/13/2026			
RE YMENG	02/23/2026	SCALE 1:1 DOCUMENT NO. WBBS238				
ECN 50106779AMO						
SIZE	Auth Group	INSL	MODEL			
C	 	DRAWING				
		VERSION	STATUS	REVISION	VERSION	STATUS
01	RE	B	01	RE	B	

COMPONENT PART NUMBERS PROVIDED FOR ASSEMBLY PURPOSES;
INDIVIDUAL COMPONENTS MAY BE SHIPPED AS PARTS WITHIN AN INCLUDED KIT.

ITEM	PART NO.	DESCRIPTION	QTY.	WEIGHT	NOTE NO.
1	WBBS04	WELDMENT, FOOT	1	9.40 LBS	
2	GUB-4240	1/2" X 2-1/2" X 4" GALV U-BOLT KIT	2	0.56 LBS	
3	MT-280	5/8" ANCHOR BOLT	4	0.64 LBS	

DENSITY	13.48	lbs/in ³
MASS	13.48	lbs
VOLUME	47.56	in ³
SURFACE AREA	398.16	in ²
HEIGHT	10.47"	
LENGTH	8.00"	
WIDTH	8.00"	

Confidential