

1.0 GENERAL NOTES  
 1.1 ALL METRIC DIMENSIONS ARE IN BRACKETS [X. X]  
 1.2 FOR PATENT INFO: <https://www.adwpat.com>

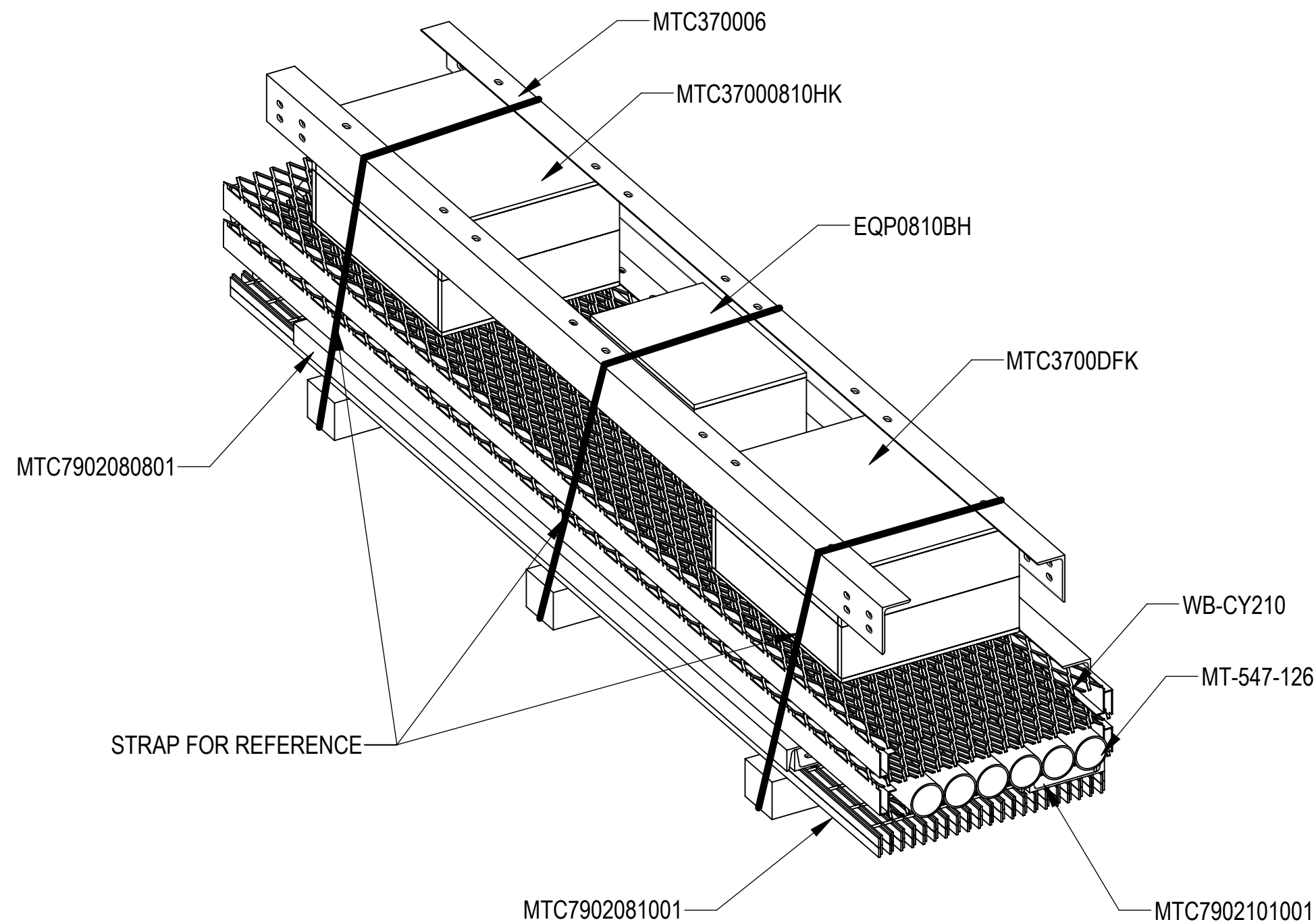
2.0 DESIGN NOTES  
 2.1 DRILL MOUNTING HOLES FOR CENTER POLE MOUNTS, CLEARANCE HOLES FOR 5/8" BOLTS.

3.0 MANUFACTURING/SPECIAL REQUIREMENTS  
 3.1 TIGHTEN ALL BOLTS SECURING FLAT PLATES BY THE TURN-OF-NUT METHOD. TIGHTEN ALL U-BOLTS USING TURN-OF-NUT METHOD WITH ATTENTION TO LEAVE EQUAL DISTANCE AND EQUAL FORCE ON EACH LEG OF THE U-BOLT.

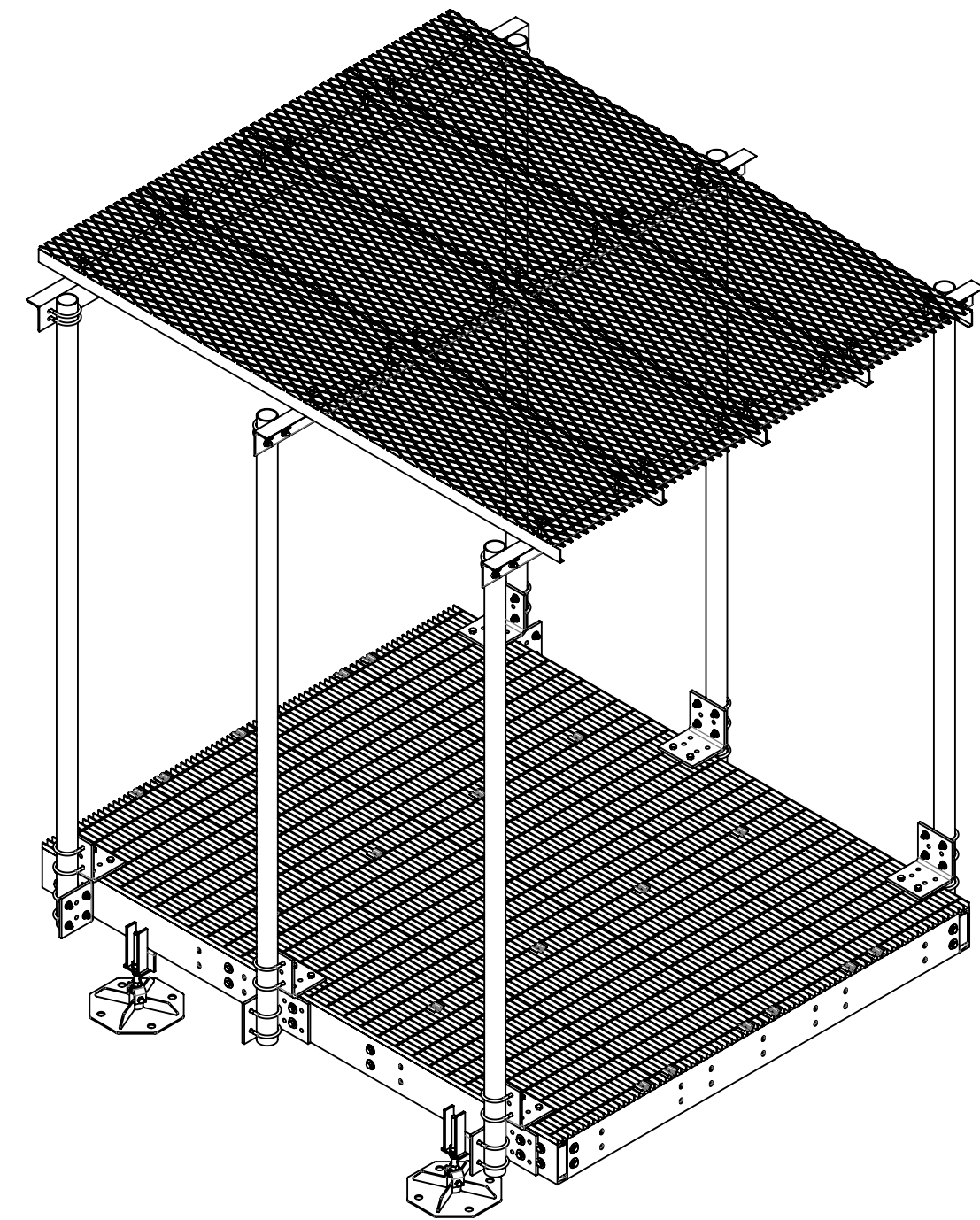
4.0 TEST


5.0 PACKAGING  
 5.1 PACKAGING SHALL MEET ANDREW REQUIREMENTS PER DOCUMENT IS-PL-3005  
 5.2 PRINTED DOCUMENT TO BE PLACED INSIDE POLYBAG AND THEN IN SHIPPING CONTAINER  
 5.3 EXTRA HARDWARE MAY BE SUPPLIED, BAGGED AND SHIPPED

REVISIONS			
REV.	DESCRIPTION	DATE	APPROVED
A	INITIAL RELEASE	ADW 15OCT14	8000005523
B	DEL MTC3700DF, ADD MTC3700DFK	MSM 31OCT14	8000005665
C	REDRAW IN SW	YX1027 02SEP24	BA1025 40203497CMO
D	EQPDF16 (ITEM 13) WAS MTC7902AL07; UPDATED PACKAGING VIEW	YC1059 25SEP25	YZ1080 50105084AMO



**PACKAGING**





**ANDREW**® an Amphenol company

TOLERANCES		SAP MATERIAL MASTER	
1 PLACE .X[X] ± 0.06[1.5]	3 PLACE .XXX[X] ± 0.010[0.3]	<b>MTC37000810F</b>	
2 PLACE .XX[X] ± 0.03[0.8]	ANGLES ± 2°		
FINISH		MATERIAL	
UNLESS OTHERWISE SPECIFIED DIMENSIONS ARE IN INCHES INTERPRET PER ANSI Y 14.5M-1994	NAME	DATE	TITLE
	CE ADW	15OCT14	<b>8'X10' PLATFORM W/ ICE SHIELD</b>
	RW YC1059	09/25/2025	
	AD YZ1080	09/29/2025	
	RE YMENG	10/09/2025	
ECN 50105084AMO			
SCALE	DOCUMENT NO.		
<b>1:32</b>	<b>MTC37000810F</b>		
SIZE	Auth Group	INSL	MODEL
<b>C</b>			
VERSION	STATUS	REVISION	DRAWING
01	RE	B	VERSION STATUS REVISION
			01 RE D
			SHEET
			1 OF 4

DENSITY		lbs/in³
MASS	2373.93	lbs
VOLUME	8402.49	in³
SURFACE AREA	89572.40	in²
HEIGHT	141"	
LENGTH	120"	
WIDTH	114"	

Confidential

4

3

2

1

D

D

C

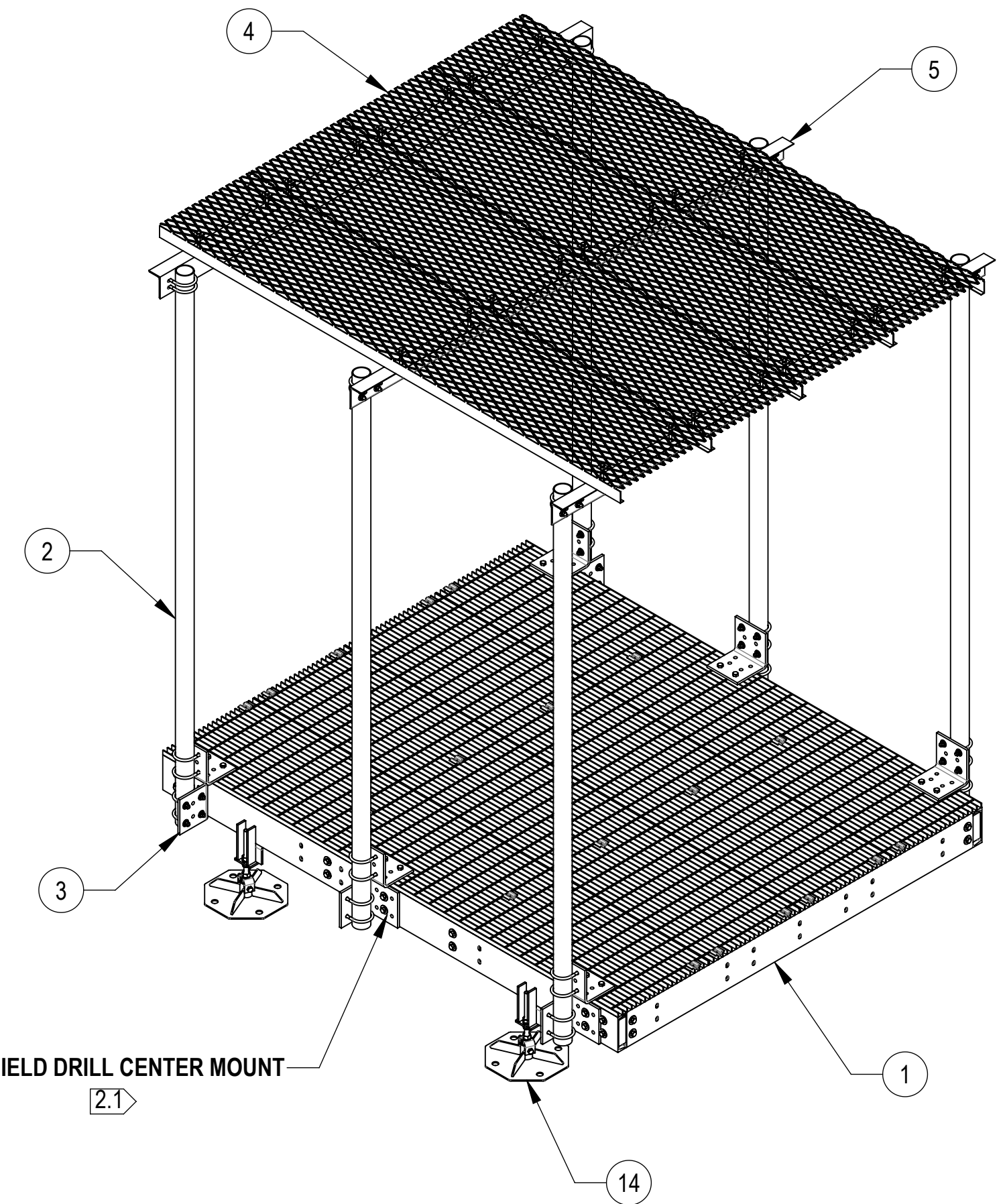
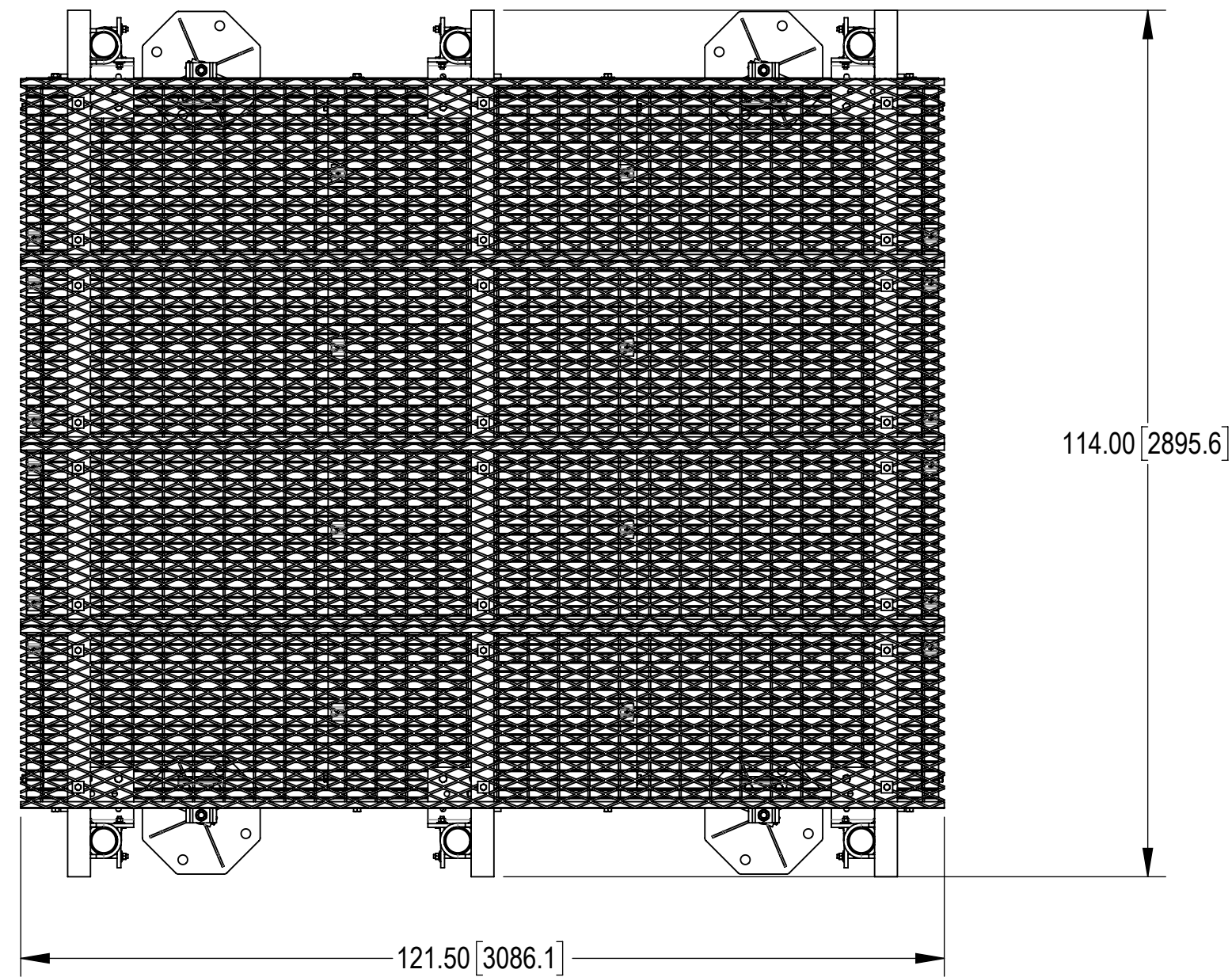
C

B

B

A

A



COMPONENT PART NUMBERS PROVIDED FOR ASSEMBLY PURPOSES;  
INDIVIDUAL COMPONENTS MAY BE SHIPPED AS PARTS WITHIN AN INCLUDED KIT.

ITEM NO.	PART NUMBER	DESCRIPTION	QTY.	WEIGHT	NOTE NO.
1	EQ-P0810-B	8' X 10' PLATFORM BASE	1	1214.31 LBS	
2	MT-547-126	3.5" O.D. X 126" PIPE	6	61.93 LBS	
3	MTC7902TR01	POST BRACKET	12	16.37 LBS	
4	WB-CY210	SAFETY GRATED WAVEGUIDE BRIDGE CHANNEL	4	49.84 LBS	
5	MTC370006	3" X 5" X 114" CANOPY TOP ANGLE	3	61.79 LBS	
6	GUB-4355	1/2" X 3-5/8" X 5" GALV U-BOLT	36	0.71 LBS	
7	GB-04445	1/2" X 4-1/2" GALV BOLT KIT	24	0.30 LBS	
8	GB-05205	5/8" X 2" GALV BOLT KIT	12	0.26 LBS	
9	GB-05305	5/8" X 3" GALV BOLT KIT	12	0.35 LBS	
10	GWF-04	1/2" GALV FLAT WASHER	24	0.04 LBS	
11	GWF-05	5/8" GALV FLAT WASHER, 1.7OD	24	0.06 LBS	
12	MT-388	WASHER, 1-1/2" X 1 1/2", 9/16"HOLE,SQ	24	0.11 LBS	
13	EQPDF16	PINCH PLATE	6	2.49 LBS	
14	MTC3700DF	EQUIPMENT PLATFORM FEET	4	34.13 LBS	

**ANDREW** an Amphenol company

TITLE: 8'X10' PLATFORM W/ ICE SHIELD

SIZE: C SCALE: 1:32 DOCUMENT NO.: MTC37000810F

DRAWING			SHEET 2 OF 4
VERSION	STATUS	REVISION	
01	RE	D	

Confidential

4

3

2

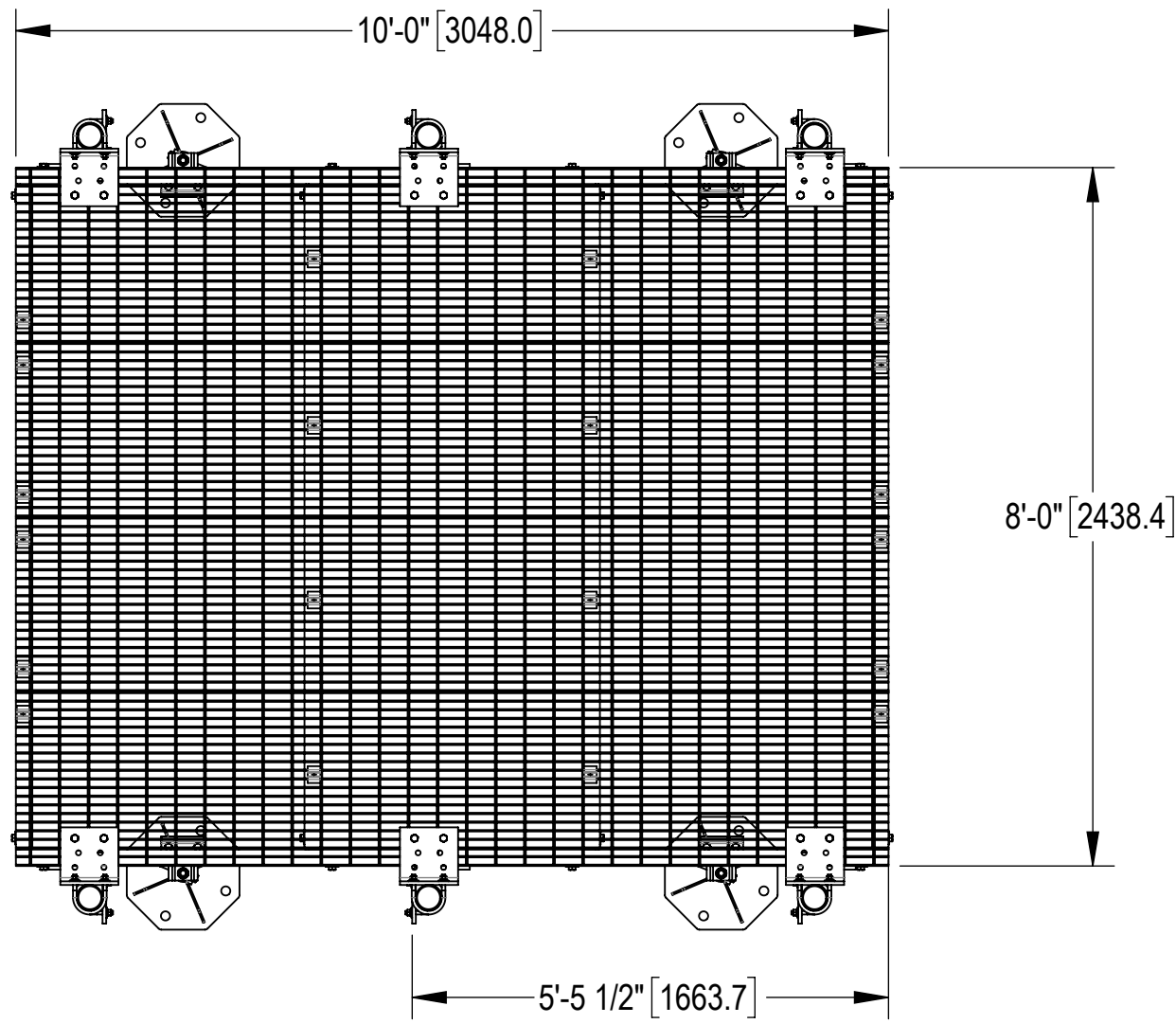
1

4

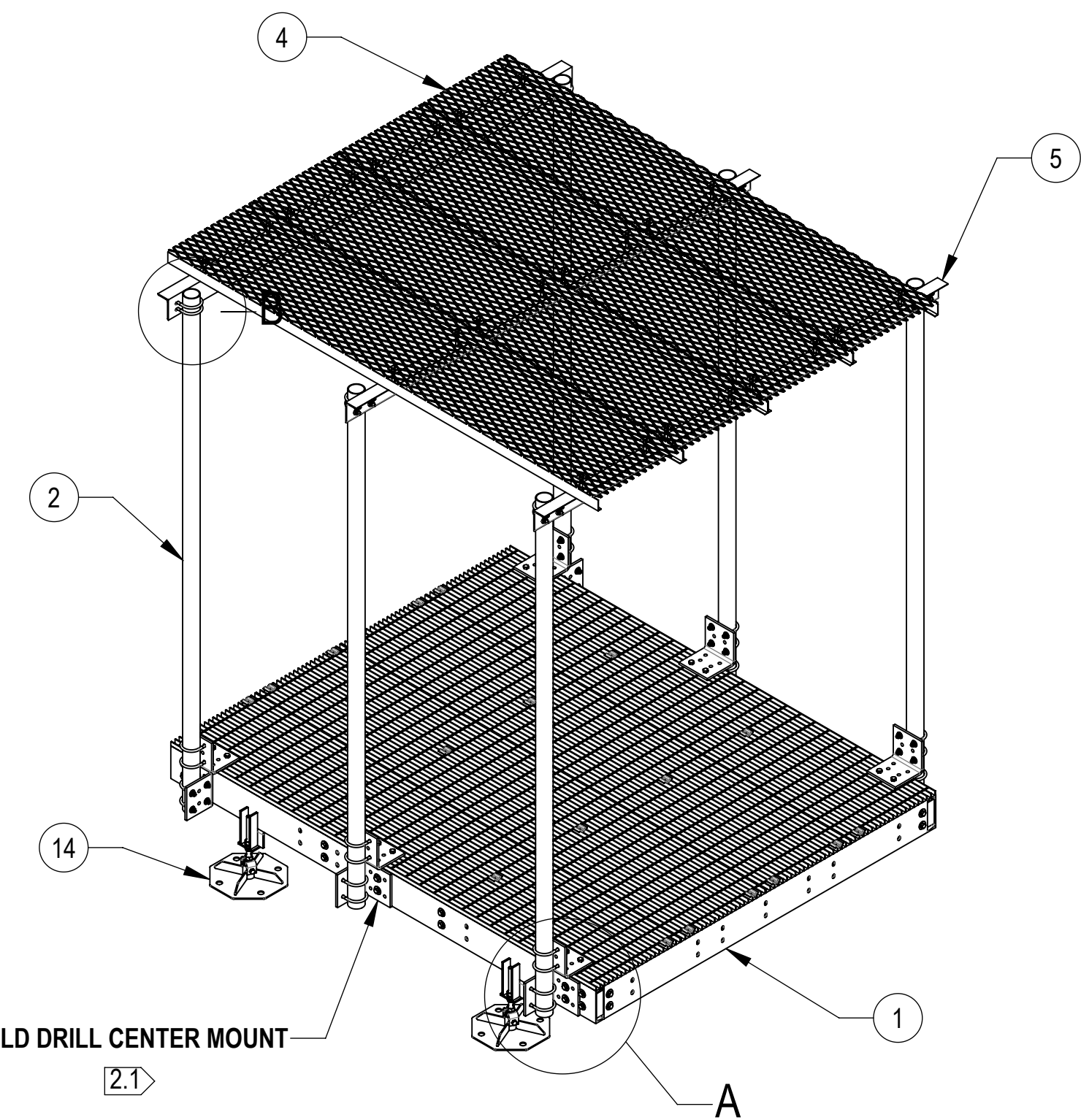
3

2

1



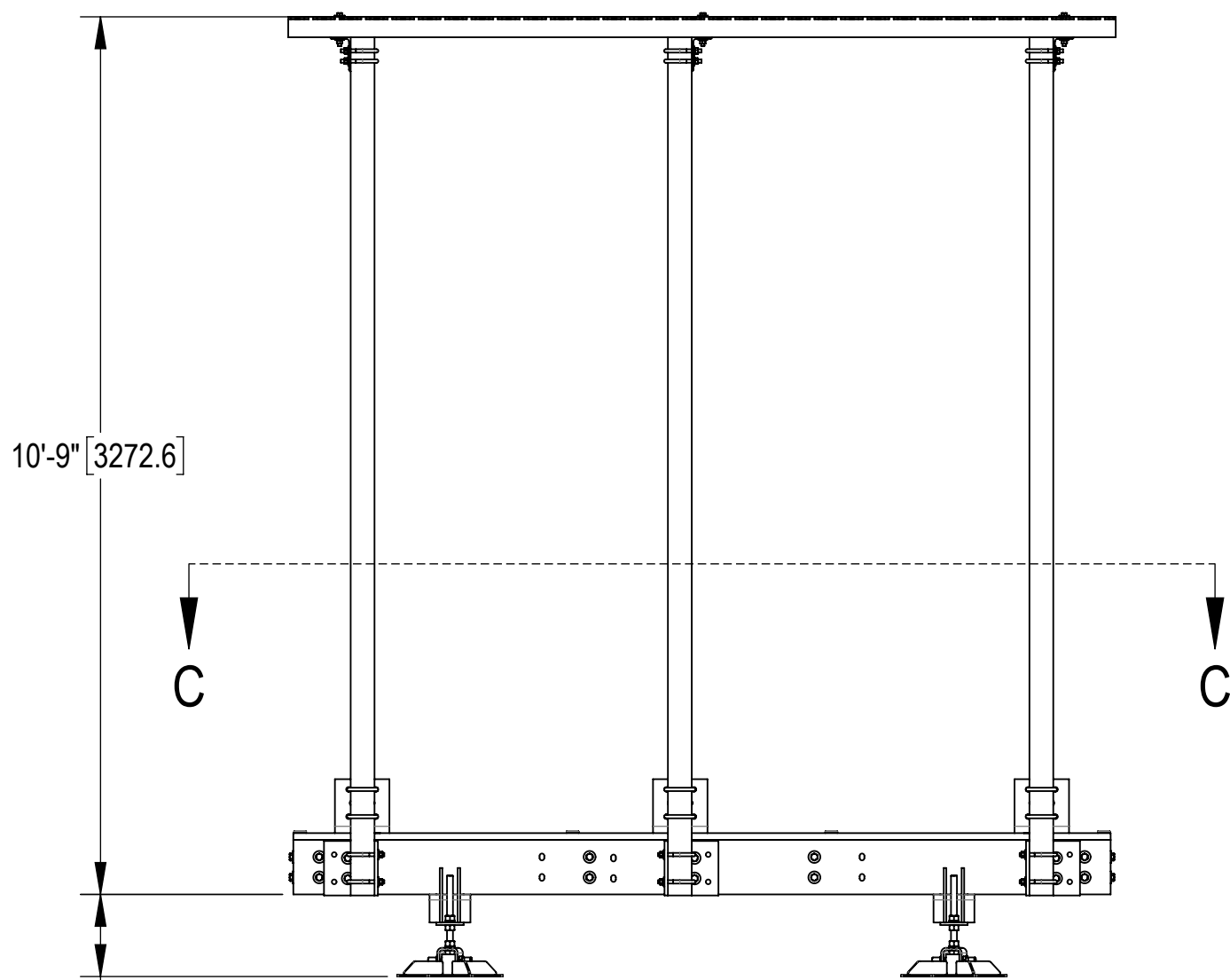
**SECTION C-C**



FIELD DRILL CENTER MOUNT

2.1

A

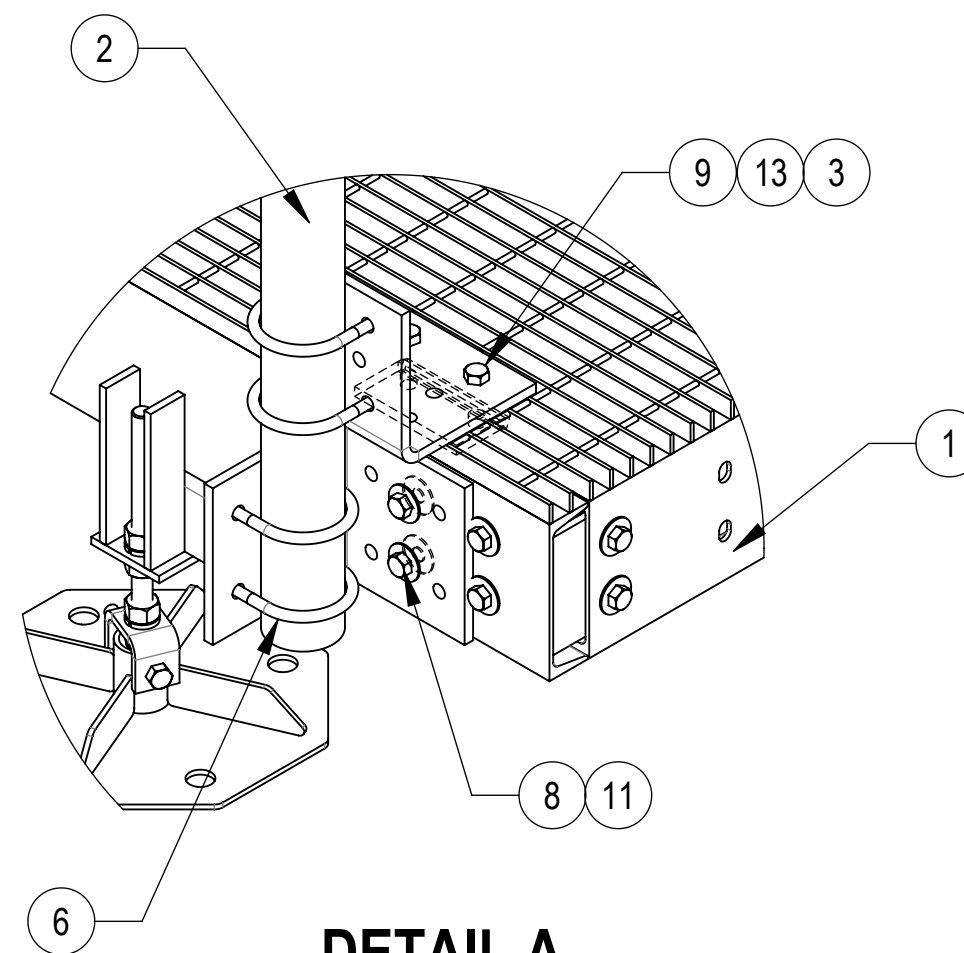


10'-9" [3272.6]

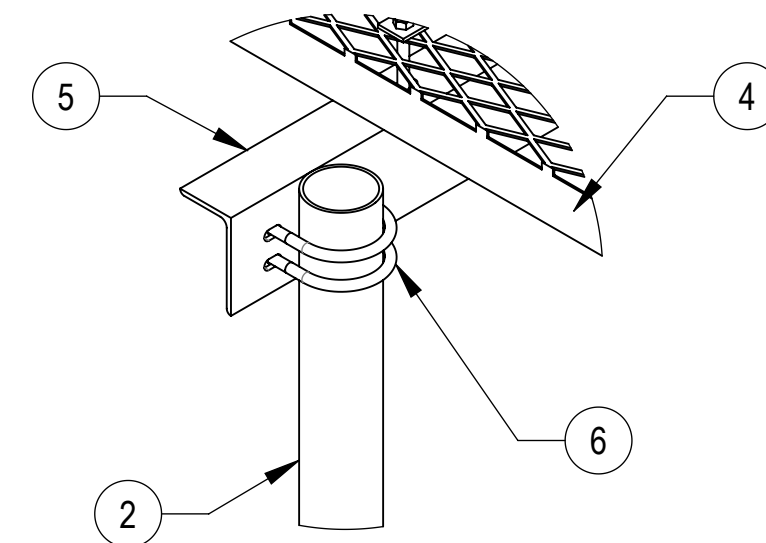
C

C

RANGE  
17.5 [443.4]  
10.5 [265.6]



**DETAIL A**



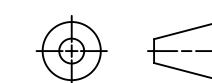
**DETAIL B**

**ANDREW** an Amphenol company

TITLE  
8'X10' PLATFORM W/ ICE SHIELD

SIZE <b>C</b>	SCALE <b>1:32</b>	DOCUMENT NO. MTC37000810F
------------------	----------------------	------------------------------

Confidential



DRAWING			SHEET 3 OF 4
VERSION	STATUS	REVISION	
01	RE	D	

4

3

2

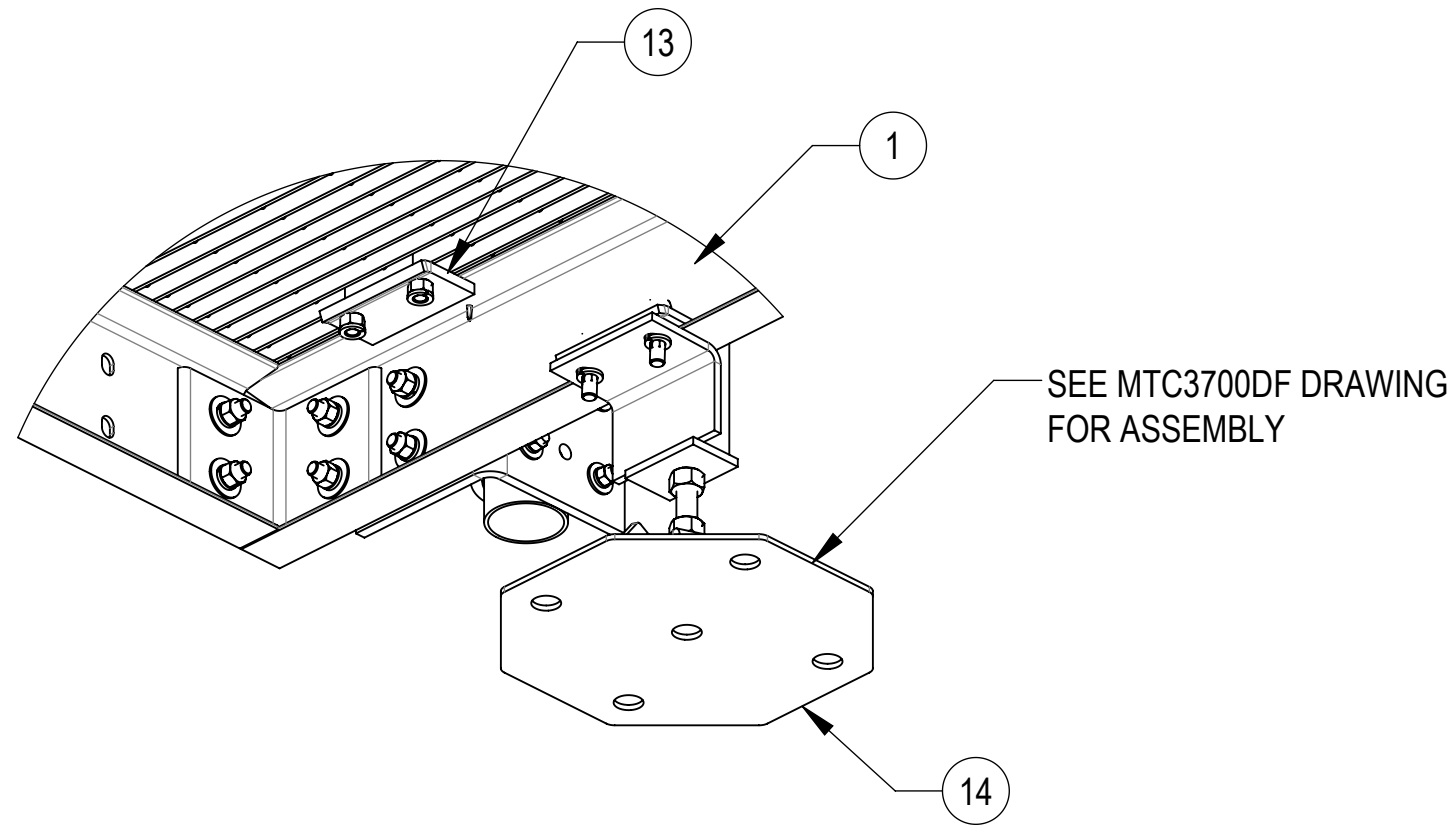
1

4

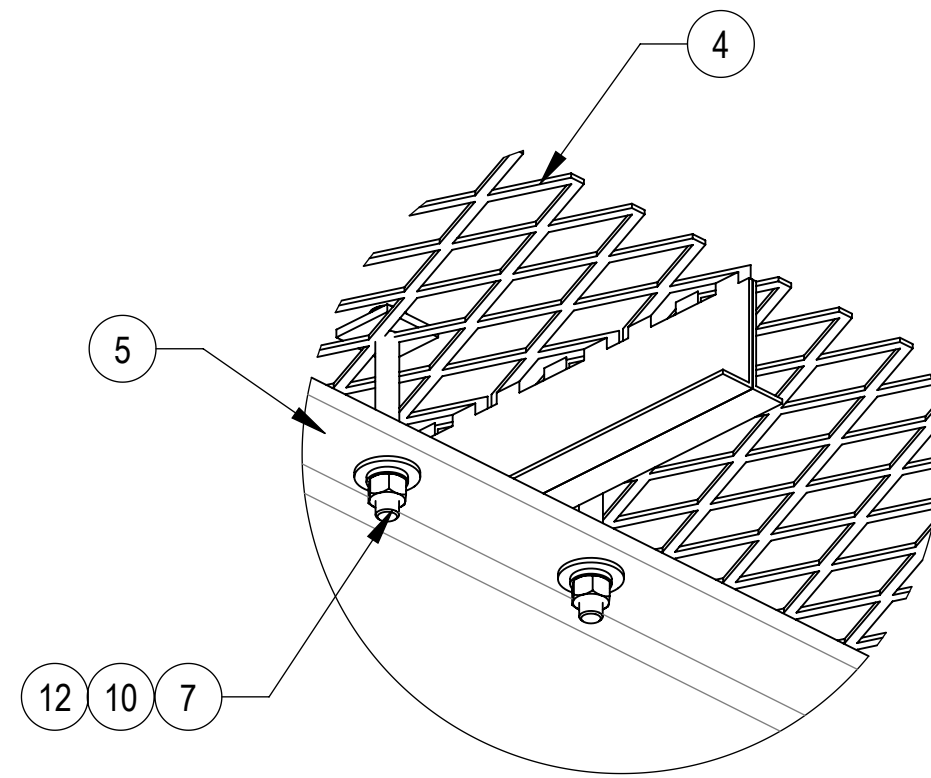
3

2

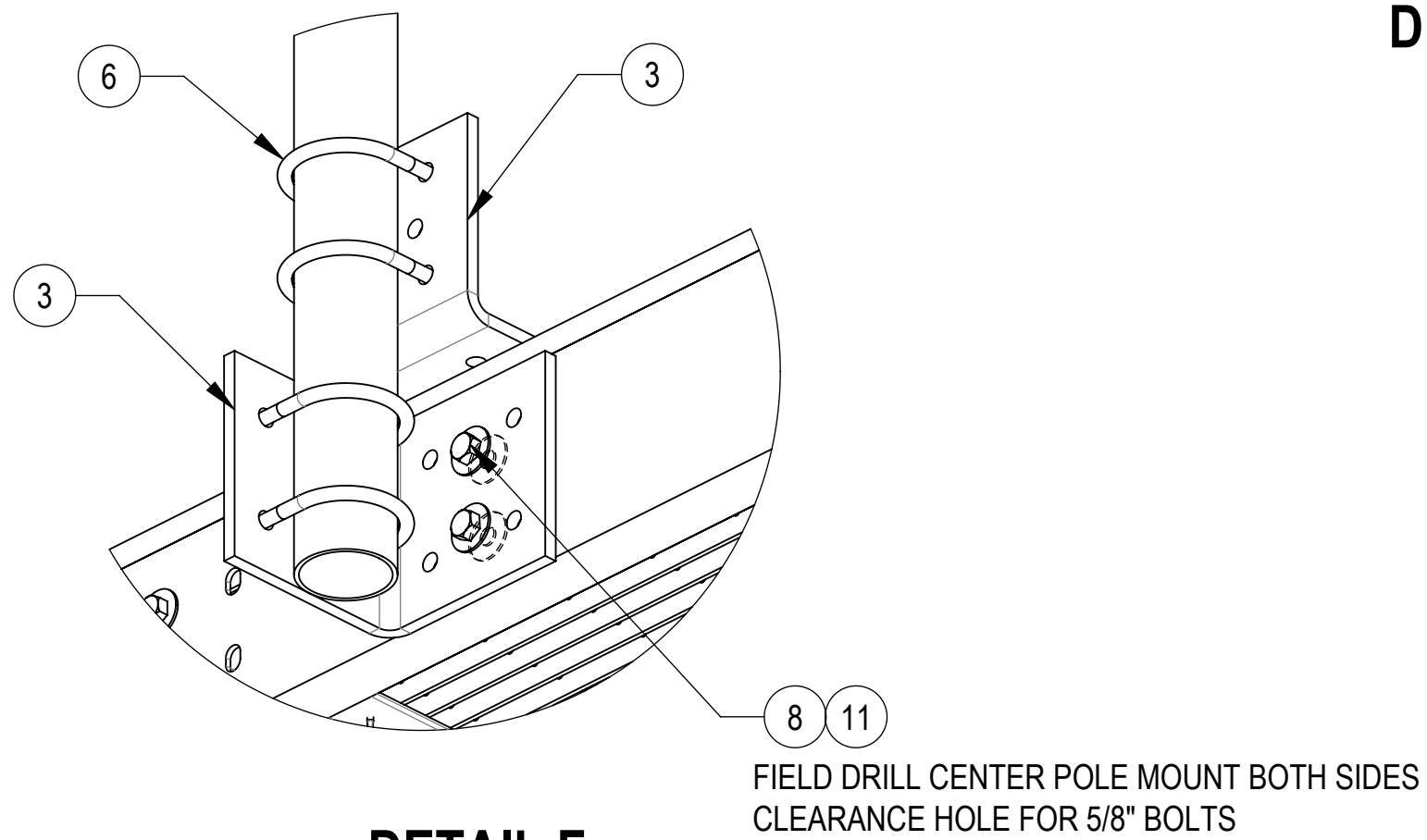
1



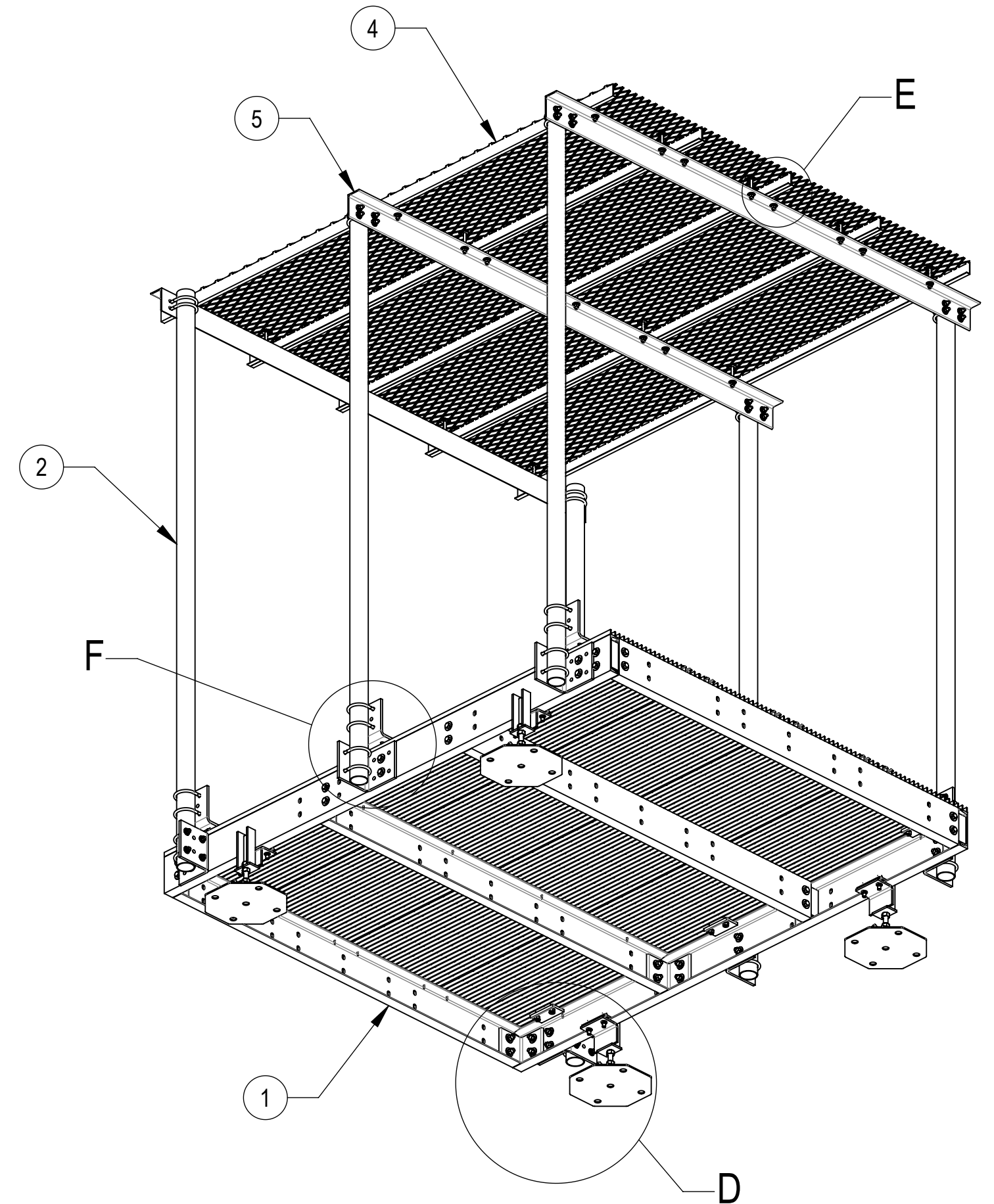
**DETAIL D**



**DETAIL E**



**DETAIL F**



TITLE  
8'X10' PLATFORM W/ ICE SHIELD

SIZE **C** SCALE **1:33.3** DOCUMENT NO. **MTC37000810F**

DRAWING			SHEET 4 OF 4
VERSION	STATUS	REVISION	
01	RE	D	

Confidential

4

3

2

1