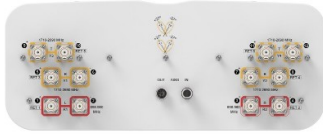


# RR2VV-6533D-R6VBV2



12-port sector/multibeam antenna, 4x 698–960 MHz 65° HPBW and 8x 1710–2690 MHz 4x 33° HPBW, 6x RET

- All Internal RET actuators are connected in “Cascaded SRET” configuration
- Uses the 4.3-10 connector which is 40 percent smaller than the 7-16 DIN connector
- Enhances network capacity through six sectors on high band while maintaining low band coverage layer through three sectors with only three antenna faces

## General Specifications

<b>Antenna Type</b>	Multibeam
<b>Band</b>	Multiband
<b>Grounding Type</b>	RF connector inner conductor and body grounded to reflector and mounting bracket
<b>Performance Note</b>	Outdoor usage
<b>Radome Material</b>	Fiberglass, UV resistant
<b>Radiator Material</b>	Low loss circuit board
<b>Reflector Material</b>	Aluminum
<b>RF Connector Interface</b>	4.3-10 Female
<b>RF Connector Location</b>	Bottom
<b>RF Connector Quantity, mid band</b>	8
<b>RF Connector Quantity, low band</b>	4
<b>RF Connector Quantity, total</b>	12

## Remote Electrical Tilt (RET) Information

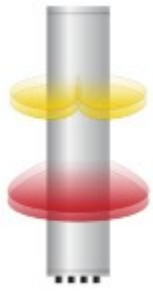

<b>RET Hardware</b>	CommRET v2
<b>RET Interface</b>	8-pin DIN Female   8-pin DIN Male
<b>RET Interface, quantity</b>	1 female   1 male
<b>Input Voltage</b>	10–30 Vdc
<b>Internal RET</b>	Low band (2)   Mid band (4)
<b>Power Consumption, active state, maximum</b>	13 W
<b>Power Consumption, idle state, maximum</b>	2 W
<b>Protocol</b>	3GPP/AISG 2.0 (Single RET)

## Dimensions

# RR2VV-6533D-R6VBV2

<b>Width</b>	498 mm   19.606 in
<b>Depth</b>	197 mm   7.756 in
<b>Length</b>	2688 mm   105.827 in
<b>Net Weight, without mounting kit</b>	36.5 kg   80.469 lb

## Array Layout

Array ID	Frequency (MHz)	RF Connector	RET (SWTS)	AISG No.	RET UID
R1	698-960	1 - 2	1	AISG1	ANXXXXXXXXXXXXXXXXR1
R2	698-960	3 - 4	2	AISG1	ANXXXXXXXXXXXXXXXXR2
Y1	1710-2690	5 - 6	3	AISG1	ANXXXXXXXXXXXXXXXXY1
Y2	1710-2690	7 - 8	4	AISG1	ANXXXXXXXXXXXXXXXXY2
Y3	1710-2690	9 - 10	5	AISG1	ANXXXXXXXXXXXXXXXXY3
Y4	1710-2690	11 - 12	6	AISG1	ANXXXXXXXXXXXXXXXXY4

Colors of colored boxes are not true depictions of array sizes

## Port Configuration



## Electrical Specifications

<b>Impedance</b>	50 ohm
<b>Operating Frequency Band</b>	1710 – 2690 MHz   698 – 960 MHz
<b>Polarization</b>	±45°
<b>Total Input Power, maximum</b>	1,400 W

## Electrical Specifications

R1,R2    R1,R2    R1,R2    Y1-Y4    Y1-Y4    Y1-Y4    Y1-Y4    Y1-Y4

# RR2VV-6533D-R6VBV2

Frequency Band, MHz	698–790	790–890	890–960	1710–1880	1850–1990	1920–2180	2300–2500	2500–2690
<b>RF Port</b>	1-4	1-4	1-4	5-12	5-12	5-12	5-12	5-12
<b>Gain, dBi</b>	16.1	16.6	16.8	18.7	19.5	19.8	19.8	20.1
<b>Beam Centers, Horizontal, degrees</b>				±27	±27	±27	±27	±27
<b>Beamwidth, Horizontal, degrees</b>	62	59	56	30	28	28	26	24
<b>Beamwidth, Vertical, degrees</b>	8.8	7.8	7.4	7.6	7.2	6.8	6	5.5
<b>Beam Tilt, degrees</b>	2–12	2–12	2–12	2–12	2–12	2–12	2–12	2–12
<b>USLS (First Lobe), dB</b>	16	15	18	18	17	17	16	16
<b>Front-to-Back Ratio, Copolarization 180° ± 30°, dB</b>	26	27	30	27	29	31	30	28
<b>CPR at Boresight, dB</b>	20	19	22	16	17	16	11	15
<b>Isolation, Cross Polarization, dB</b>	25	25	25	25	25	25	25	25
<b>Isolation, Inter-band, dB</b>	25	25	25	25	25	25	25	25
<b>Isolation, Beam to Beam, dB</b>				16	16	16	16	16
<b>VSWR   Return loss, dB</b>	1.5 14.0	1.5 14.0	1.5 14.0	1.5 14.0	1.5 14.0	1.5 14.0	1.5 14.0	1.5 14.0
<b>PIM, 3rd Order, 2 x 20 W, dBc</b>	-153	-153	-153	-153	-153	-153	-153	-153
<b>Input Power per Port, maximum, watts</b>	300	300	300	200	200	200	200	200

## Mechanical Specifications

<b>Wind Loading @ Velocity, frontal</b>	1,070.0 N @ 150 km/h (240.5 lbf @ 150 km/h)
<b>Wind Loading @ Velocity, lateral</b>	375.0 N @ 150 km/h (84.3 lbf @ 150 km/h)
<b>Wind Loading @ Velocity, rear</b>	880.0 N @ 150 km/h (197.8 lbf @ 150 km/h)
<b>Wind Speed, maximum</b>	200 km/h (124 mph)

## Packaging and Weights

<b>Width, packed</b>	573 mm   22.559 in
<b>Depth, packed</b>	322 mm   12.677 in
<b>Length, packed</b>	2830 mm   111.417 in
<b>Weight, gross</b>	55.5 kg   122.356 lb

## Regulatory Compliance/Certifications

Agency	Classification
ISO 9001:2015	Designed, manufactured and/or distributed under this quality management system

# RR2VV-6533D-R6VBV2

---

UK-ROHS

Compliant

## Included Products

- BSAMNT-B95-02 – Wide Profile Antenna Downtilt Mounting Kit for 2.4 - 4.5 in (60 - 115 mm) OD round members. Kit contains one scissor top bracket set, one middle bracket set and one bottom bracket set.

## \* Footnotes

**Performance Note** Severe environmental conditions may degrade optimum performance

# BSAMNT-B95-02

---



Wide Profile Antenna Downtilt Mounting Kit for 2.4 - 4.5 in (60 - 115 mm) OD round members. Kit contains one scissor top bracket set, one middle bracket set and one bottom bracket set.

## Product Classification

**Product Type** Downtilt mounting kit

## General Specifications

**Application** Outdoor

**Color** Silver

## Dimensions

**Compatible Diameter, maximum** 114.3 mm | 4.5 in

**Compatible Diameter, minimum** 61 mm | 2.402 in

**Weight, net** 6 kg | 13.228 lb

## Material Specifications

**Material Type** Galvanized steel

## Packaging and Weights

**Included** Brackets | Hardware

**Packaging quantity** 3

## Regulatory Compliance/Certifications

### Agency

CE  
ISO 9001:2015

### Classification

Compliant with the relevant CE product directives  
Designed, manufactured and/or distributed under this quality management system

