

6VV6SS-10B-F6



48-port multibeam antenna, 6 beams for 1695-2690 MHz, 6 beams for 3300-4000 MHz, 4 ports for each beam, Fixed Electrical Tilt

- Ultra-high capacity antenna provides increased throughput for special events or very high traffic locations
- Provides higher capacity than single radio massive MIMO solution
- Multibeam antenna with 6x MB beams and 6x 3GHz beams
- All beams support 4T4R service or 2T2R service for 2 licensed bands
- 3.5 GHz beams aligned with mid band beams for use with 5G NSA or SA

General Specifications

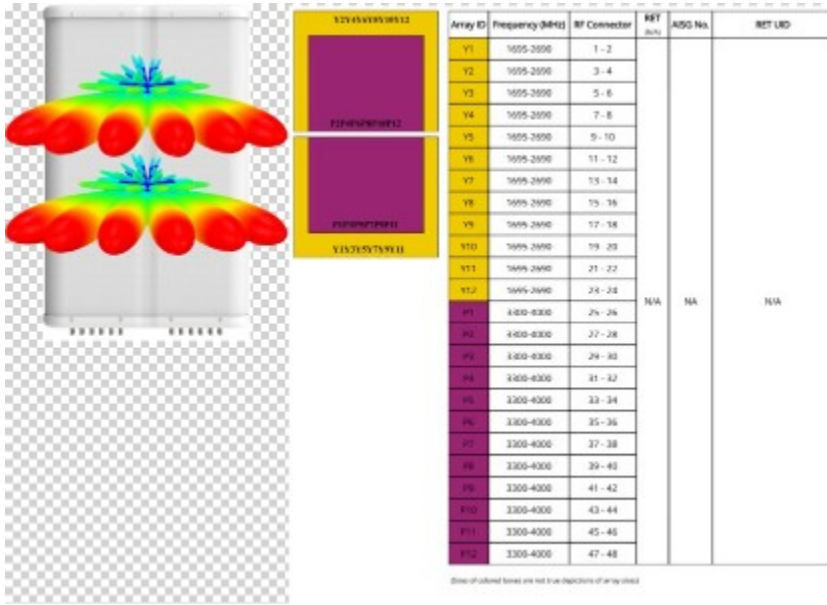
Antenna Type	Multibeam
Band	Multiband
Color	Light Gray (RAL 7035)
Grounding Type	RF connector inner conductor and body grounded to reflector and mounting bracket
Performance Note	Outdoor usage
Radome Material	Fiberglass, UV resistant
Radiator Material	Low loss circuit board
Reflector Material	Aluminum
RF Connector Interface	4.3-10 Female
RF Connector Location	Bottom
RF Connector Quantity, high band	24
RF Connector Quantity, mid band	24
RF Connector Quantity, total	48

Dimensions

Width	970 mm 38.189 in
Depth	235 mm 9.252 in
Length	1700 mm 66.929 in
Net Weight, without mounting kit	63.5 kg 139.993 lb

Array Layout

6VV6SS-10B-F6



Port Configuration



Electrical Specifications

Impedance	50 ohm
Operating Frequency Band	1695 – 2690 MHz 3300 – 4000 MHz
Polarization	±45°
Total Input Power, maximum	2,880 W

6VV6SS-10B-F6

Electrical Specifications

	Y1-Y12	Y1-Y12	Y1-Y12	P1-P12	P1-P12
Frequency Band, MHz	1695–1990	1920–2180	2300–2690	3300–3700	3700–4000
RF Port	1-24	1-24	1-24	25-48	25-48
Gain, Maximum, dBi	21.7	21.9	23	20.3	20.6
Gain, dBi	20.9	21.1	21.9	19.7	19.7
Beam Centers, Horizontal, degrees	±8 ±24 ±40	±8 ±24 ±40	±8 ±24 ±40	±8 ±24 ±40	±8 ±24 ±40
Beam Crossover, dB	8	9	9	9	9
Beamwidth, Horizontal, degrees	12	11	9	12	11
Beamwidth, Vertical, degrees	15.1	13.7	11.1	14.2	13.1
Beam Tilt, degrees	6	6	6	6	6
USLS (First Lobe), dB	15	14	13	10	14
Front-to-Back Ratio at 180°, dB	35	35	30	27	27
Isolation, Cross Polarization, dB	25	25	25	25	25
Isolation, Inter-band, dB	25	25	25	25	25
Isolation, Beam to Beam, dB	18	18	17	14	14
VSWR Return loss, dB	1.5 14.0	1.5 14.0	1.5 14.0	1.5 14.0	1.5 14.0
PIM, 3rd Order, 2 x 20 W, dBc	-153	-153	-153	-145	-145
Input Power per Port, maximum, watts	120	120	120	40	40

Mechanical Specifications

Wind Loading @ Velocity, frontal	2,108.0 N @ 150 km/h (473.9 lbf @ 150 km/h)
Wind Loading @ Velocity, lateral	644.0 N @ 150 km/h (144.8 lbf @ 150 km/h)
Wind Loading @ Velocity, rear	2,108.0 N @ 150 km/h (473.9 lbf @ 150 km/h)
Wind Speed, maximum	241 km/h (150 mph)

Packaging and Weights

Width, packed	1122 mm 44.173 in
Depth, packed	561 mm 22.087 in
Length, packed	1966 mm 77.402 in

6VV6SS-10B-F6

Weight, gross 93.5 kg | 206.132 lb

Regulatory Compliance/Certifications

Agency	Classification
UK-ROHS	Compliant

Included Products

- BSAMNT-9 – Wide Profile Antenna Downtilt Mounting Kit for 2.4 - 4.5 in (60 - 115 mm) OD round members. Kit contains one scissor top bracket set and one bottom bracket set.

* Footnotes

Performance Note Severe environmental conditions may degrade optimum performance

BSAMNT-9



Wide Profile Antenna Downtilt Mounting Kit for 2.4 - 4.5 in (60 - 115 mm) OD round members. Kit contains one scissor top bracket set and one bottom bracket set.

Product Classification

Product Type Downtilt mounting kit

General Specifications

Application Outdoor

Color Silver

Dimensions

Compatible Diameter, maximum 115 mm | 4.528 in

Compatible Diameter, minimum 60 mm | 2.362 in

Material Specifications

Material Type Galvanized steel

Packaging and Weights

Included Brackets | Hardware

Packaging quantity 1

Weight, gross 9.7 kg | 21.385 lb

Regulatory Compliance/Certifications

Agency	Classification
CE	Compliant with the relevant CE product directives
CHINA-ROHS	Below maximum concentration value
ISO 9001:2015	Designed, manufactured and/or distributed under this quality management system
REACH-SVHC	Compliant as per SVHC revision on www.andrew.com/ProductCompliance
ROHS	Compliant
UK-ROHS	Compliant



BSAMNT-9

