

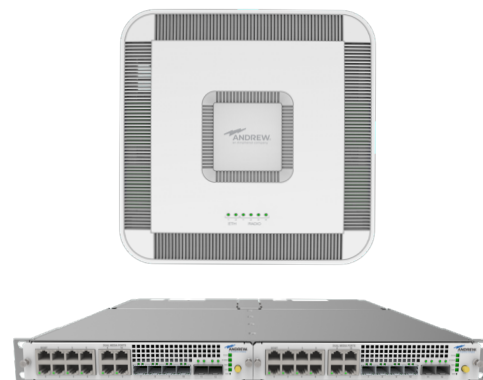


ONECELL® IN-BUILDING LTE AND 5G SMALL CELL

TAKE CONTROL OF YOUR CELLULAR EXPERIENCE

BETTER IN-BUILDING CELLULAR COVERAGE POWERS BETTER USER EXPERIENCES

Reliable, flexible in-building cellular coverage that reaches every corner is a must-have for commercial buildings that are home to all types of organizations including businesses, government agencies, hospitals and universities. Uninterrupted coverage helps to attract and retain businesses and tenants, improves productivity for building employees, and enhances customer experience and personal safety, by making mobile communication easier and more reliable. Emerging 5G technology and growing user demands require solutions that are intelligent, easy to manage and future-ready.



ONECELL from ANDREW, now part of ERA[®], lets enterprises and property owners take control of their in-building cellular experience. This small cell solution delivers a clear, reliable signal throughout buildings—even during intense usage surges. High-quality coverage can be extended to adjacent outdoor spaces such as courtyards and parking lots.



THE BENEFITS OF ONECELL®



For enterprises and building owners

- Take control of your cellular experience—ONECELL brings clear voice signals and high-speed data throughout the premise.
- Future-ready—modular, software-based architecture simplifies migration to 5G.
- Compact footprint—a single 1U-high controller supports up to thousands of users.
- Expert partner ecosystem—CommScope's network of qualified system integrators will specify, design, and install the system, and can even provide 24x7 monitoring and support.



For service providers, neutral hosts and system integrators

- Simple design and configuration—ONECELL's innovative single-cell architecture simplifies RF planning. The system runs on standard Ethernet LANs and cabling.
- Multi-operator support—a single ONECELL system can support multiple frequency bands for multi-operator or neutral host services.
- Flexible management tools allow granular visibility and control needed by operators, neutral hosts, and system integrators.
- Hardware, software, and management interfaces support emerging Open RAN architectures and standards.

READY FOR 5G

5G is no longer on the horizon—it's here, and expectations for always-on, high-speed connectivity are only growing. Enterprises and commercial buildings must now deliver seamless in-building 5G while continuing to support robust 4G/LTE experiences. ONECELL is built for this new era. Its RP5000 radio points support LTE today and are software-upgradable to 5G, enabling a smooth, cost-effective evolution without the need for hardware replacement.





ONE CELL® SYSTEM DESCRIPTION



CommScope's ONECELL solution includes:

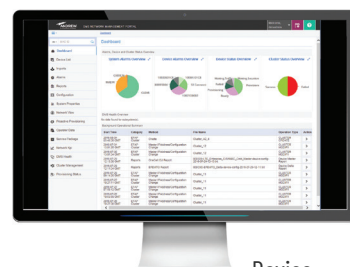
- A **baseband controller** that provides the signal source. It serves up to 1,024 simultaneous users in half of a standard 1U chassis
- **Radio Points** that transmit and receive radio-frequency (RF) signals over the air. Edge intelligence in the radio points enables advanced features such as cell virtualization, enhanced signal quality and user location awareness for emergency services.
- **RP5000 Series** supports up to four frequency bands simultaneously for multiple operators or multiple bands per operator. Programmable logic allows software switching between LTE and 5G.
- **Device management system (DMS)** that automates provisioning and ongoing support for ONECELL deployments. It can automatically configure more than 100 key network and RF parameters. The system is available via software license or software as a service (SaaS).
- Standard Category 6A structured cabling and RUCKUS® ICX Ethernet switches for a turnkey solution that saves time and money



ONECELL
radio points



ONECELL
ruggedized
radio points



Device
Management
System

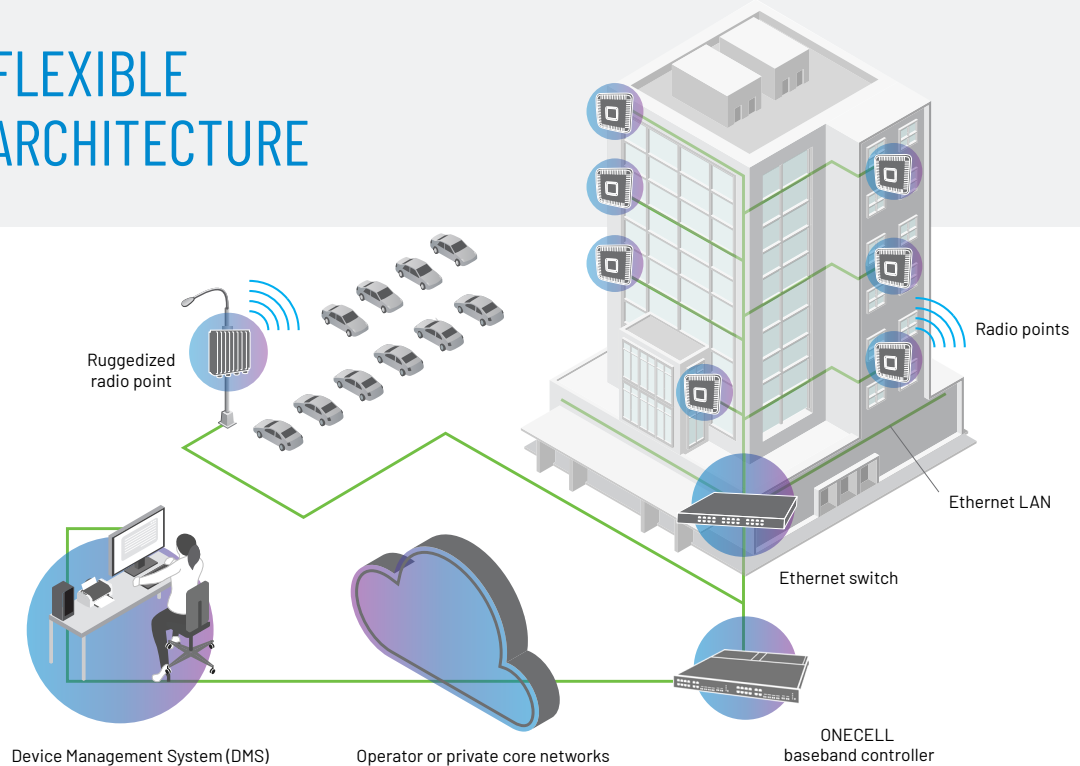


ONECELL baseband controller chassis



RUCKUS ICX ethernet switch

SIMPLE, FLEXIBLE SYSTEM ARCHITECTURE



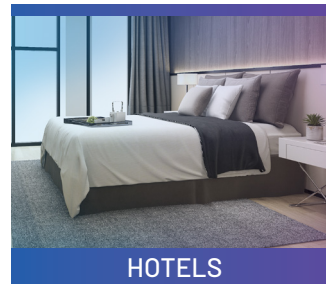
BUSINESS USES



In businesses and other organizations, mobile phones have replaced most landlines, making it imperative to offer a reliable mobile experience. Businesses, tenants and visitors expect coverage throughout the premises. Dropped calls and poor signals negatively affect employee productivity and can lose tenants. An in-building cellular solution helps address these challenges, while reducing the need to provide guest Wi-Fi access.



Hospital buildings are notorious for spotty cellular coverage. Inside, it's often necessary to go near windows or even outdoors for a clear signal. Strong in-building reception is a must-have for doctors, staff, caregivers, patients and family members.



Guests expect a five-star—and five-bar—experience. Dead zones cause major frustrations for guests and staff alike in daily operations. Mobile coverage must be strong and reliable throughout the property. Reliable in-building cellular coverage helps ensure they can communicate.



Creating a positive in-store experience is a priority for retailers. Consumers expect reliable cellular service to easily access coupons and promotions while shopping and obtain product information online. Happy consumers post and share positive reviews online, helping drive future sales.

A photograph of a business meeting. In the foreground, a person's hand holds a pen, pointing at a pie chart on a document. Another person's hand is visible, resting on the document. A laptop and a tablet are also on the table. The background is blurred, showing other people in business attire. The image has a blue and purple color gradient overlay.

INDOOR COVERAGE HAS NEVER BEEN EASIER

A TRUSTED PARTNER THAT DELIVERS IT ALL

ANDREW has led the industry in helping companies of all sizes scale, build and sustain robust connections that power more efficient buildings. From office buildings, hospitals, hotels and airports to NFL stadiums, college campuses and beyond, ANDREW is a leader in in-building cellular systems. We have tremendous in-house expertise and a global network of experienced solution providers.

Contact your ANDREW representative or Solution Provider today to learn how your network can do more than you ever imagined. Visit andrew.com to learn more.

Since 1937, ANDREW, an Amphenol company, has driven the evolution of wireless technology. Trusted by mobile network operators and enterprises globally, we work closely with our customers to deliver innovative solutions that enhance connectivity experiences both outdoors and indoors. Our dedicated global team is committed to advancing the industry, fueled by the vision that a better-connected future is possible.



[ANDREW.COM](https://www.andrew.com)

Visit our website or contact your local ANDREW representative for more information.

©2025 ANDREW, an Amphenol company. All rights reserved. Amphenol and ANDREW are registered trademarks of Amphenol and/or its affiliates in the U.S. and other countries. All product names, trademarks and registered trademarks are property of their respective owners. CO-200342-EN (05/25)