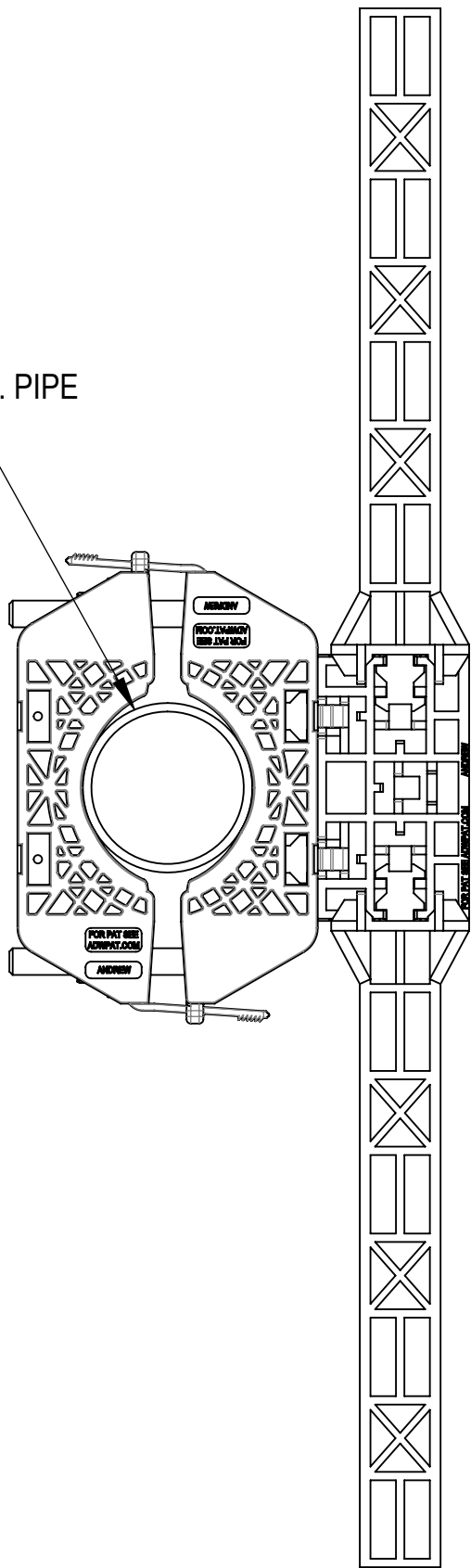


- 1.0 GENERAL NOTES
- 1.1 ALL METRIC DIMENSIONS ARE IN BRACKETS [X.X]
- 1.2 FEATURES CRITICAL TO QUALITY ARE INDICATED IN ROUNDED BOX (X.X)
- 2.0 DESIGN NOTES
- 3.0 MANUFACTURING/SPECIAL REQUIREMENTS
- 3.1 TIGHTEN ALL BOLTS SECURING FLAT PLATES BY THE TURN-OF-NUT METHOD.
- 4.0 TEST
- 5.0 PACKAGING
- 5.1 PACKAGING MUST BE AGREED TO IN WRITING BY ANDREW PRIOR TO MASS-PRODUCTION APPROVAL.
- 5.2 PARTS ARE TO BE PACKAGING IN A MANNER OT PREVENT DAMAGE DURING SHIPMENT & STORAGE.
- 5.3 PACKAGING TO ADHERE TO ALL ANDREW, LOCAL & FOREIGN (WHERE APPLICABLE) SHIPPING REQUIREMENTS.
- 5.4 PACKAGING & PARTS TO BE FREE OF ALL CONTAMINANTS INCLUDING PAPER FROM BOX, DIRT, DUST, OILS, MOLD RELEASE, DETERGENT AND ALL OTHER FOREIGN MATERIALS.

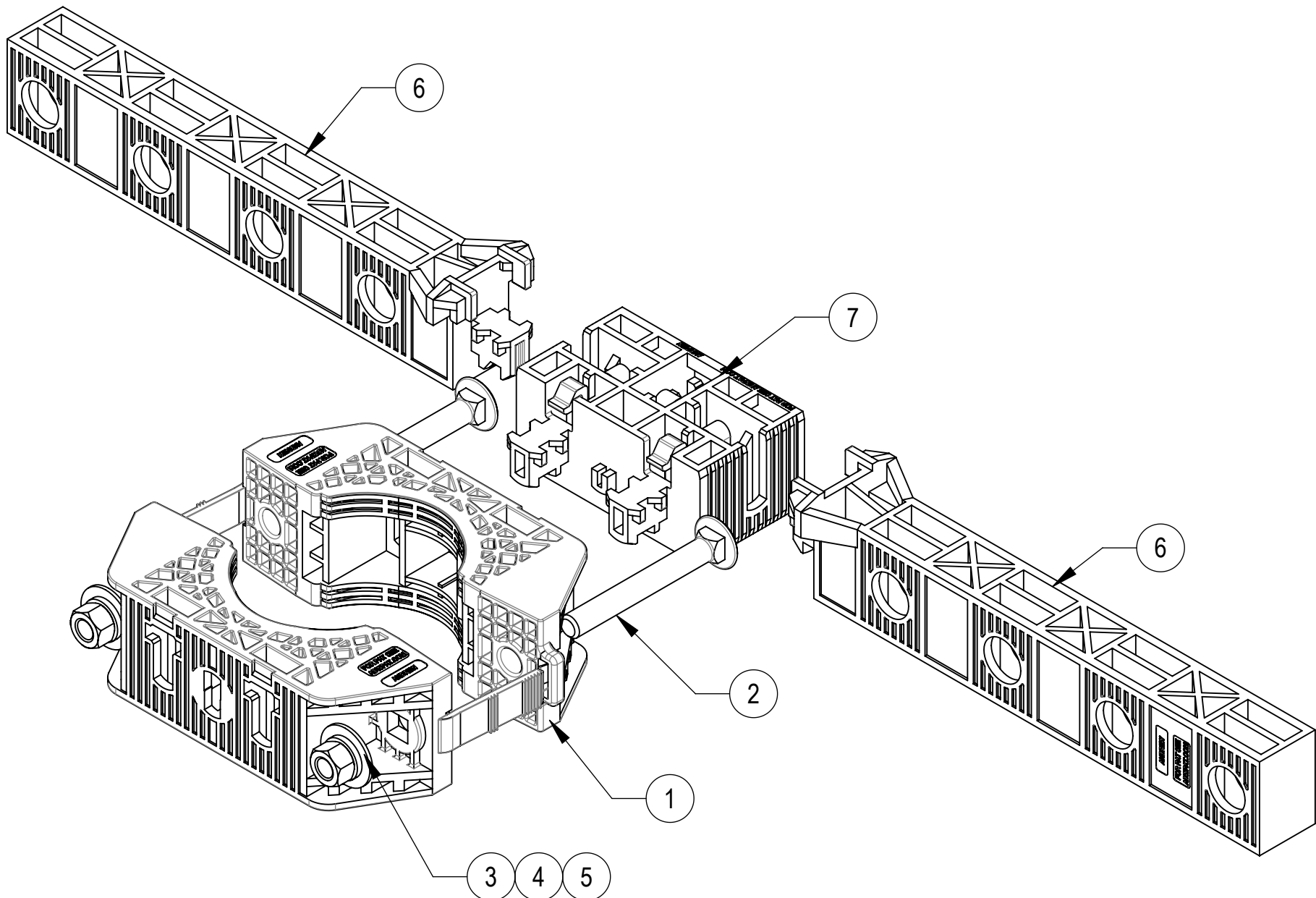


REVISIONS			
REV.	DESCRIPTION	DATE	APPROVED
A	INITIAL RELEASE	JL1183 14JUN24	JX1030 40196238CMO
B	UPDATED VIEWS FOR PGCS-1000(ITEM 1), PGCS-5000(ITEM 6), PGCS-6000(ITEM 7) CHANGES; UPDATED TO ANDREW LOGE	JL1183 10JUN25	JX1030 50103287AMO

FIT Ø 2.375" O.D. OR Ø 2.875" O.D. PIPE
(NOT INCLUDED IN THIS KIT)







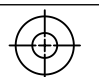
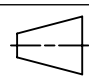
ASSEMBLY TOP VIEW



INSTALLATION ASSEMBLY

COMPONENT PART NUMBERS PROVIDED FOR ASSEMBLY PURPOSES;
INDIVIDUAL COMPONENTS MAY BE SHIPPED AS PARTS WITHIN AN INCLUDED KIT.

ITEM NO.	PART NUMBER	DESCRIPTION	QTY.	WEIGHT
1	PGCS-1000	CLAMP,FRONT-REAR, POLYMER 4CP	2	0.33 LBS
2	9615-15	BOLT,CARRIAGE,3/8-16,3,STL GALV	2	0.12 LBS
3	GWf-03	3/8" GALV FLAT WASHER	2	0.01 LBS
4	GWL-03	3/8" GALV LOCK WASHER	2	0.01 LBS
5	GN-03	3/8" GALV HEX NUT	2	0.02 LBS
6	PGCS-5000	PANEL, HALF, POLYMER, 8CP	2	0.30 LBS
7	PGCS-6000	ADAPTER, POLYMER, 2CP	1	0.21 LBS

<div>ANDREW[®] an Amphenol company</div>											
TOLERANCES						SAP MATERIAL MASTER					
1 PLACE .X[X] ± 0.2[6.3]			3 PLACE .XXX[X] ± 0.060[1.5]			PGP-CS16L					
2 PLACE .XX[X] ± 0.12[3.0]			ANGLES ± 2°								
FINISH					MATERIAL						
UNLESS OTHERWISE SPECIFIED DIMENSIONS ARE IN INCHES INTERPRET PER ANSI Y 14.5M-1994		NAME	DATE	PG PREMIUM,CBL-SUPPORT,16-HOLE							
	CE	JL1183	14JUN24								
	RW	JL1183	06/11/2025								
				SCALE 1:3 DOCUMENT NO. PGP-CS16L							
	AD	JX1030	06/11/2025								
	RE	JL1183	06/11/2025								
	ECN 50103287AMO										
SIZE	Auth Group		INSL	MODEL			DRAWING			SHEET 1 OF 1	
C				VERSION	STATUS	REVISION	VERSION	STATUS	REVISION		
				01	RE	B	01	RE	B		

Confidential